

FITC Anti-Rat CD3 Antibody[G4.18]

Catalog Number: E-AB-F1228UC

Note: Centrifuge before opening to ensure complete recovery of vial contents.

Description

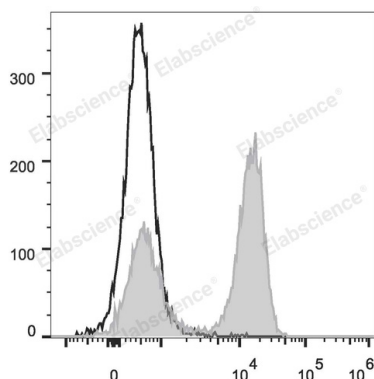
Reactivity	Rat
Host	Mouse
Isotype	Mouse IgG3, κ
Clone No.	G4.18
Isotype Control	FITC Mouse IgG3, κ Isotype Control[A112-3] [Product E-AB-F09753C]
Conjugation	FITC
Conjugation Information	FITC is designed to be excited by the Blue laser (488 nm) and detected using an optical filter centered near 530 nm (e.g., a 525/40 nm bandpass filter).
Storage Buffer	Phosphate buffered solution, pH 7.2, containing 0.09% stabilizer.

Applications

Recommended usage

FCM	Each lot of this antibody is quality control tested by flow cytometric analysis. Please check your vial before the experiment. Since applications vary, the appropriate dilutions must be determined for individual use. We suggest each investigator should titrate the reagent to obtain optimal results [The recommended concentration is 0.1-1 μg/10 ⁶ cells in 100 μL volume].
------------	--

Data



Rat splenocytes are stained with FITC Anti-Rat CD3 Antibody (filled gray histogram). Unstained splenocytes (empty black histogram) are used as control.

Preparation & Storage

Storage	Keep as concentrated solution. This product can be stored at 2-8°C for 24 months. Please protected from prolonged exposure to light and do not freeze.
Shipping	Ice bag

Antigen Information

Alternate Names	T3and ζ chains;CD3;CD3 Complex;T-cell surface glycoprotein CD3 δ
Uniprot ID	P19377;Q64159;D4A5M2
Gene ID	25710;300678;315609;25300

For Research Use Only

Background

CD3 is a complex composed of δ , γ , ϵ , and ζ chains. They are 20-25 kD members of the immunoglobulin superfamily and associated with the T cell receptor (TCR). CD3 is expressed on thymocytes, peripheral T cells, some NK-T cells, and dendritic epidermal T cells. CD3 is involved in antigen recognition, signal transduction, and T cell activation