

# N-Cadherin Polyclonal Antibody

catalog number: E-AB-64010

**Note:** Centrifuge before opening to ensure complete recovery of vial contents.

## Description

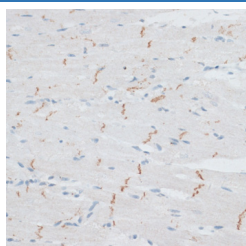
<b>Reactivity</b>	Human;Mouse;Rat
<b>Immunogen</b>	A synthetic peptide of human N-Cadherin (NP_001783.2).
<b>Host</b>	Rabbit
<b>Isotype</b>	IgG
<b>Purification</b>	Affinity purification
<b>Conjugation</b>	Unconjugated
<b>buffer</b>	Phosphate buffered solution, pH 7.4, containing 0.05% stabilizer and 50% glycerol.

## Applications

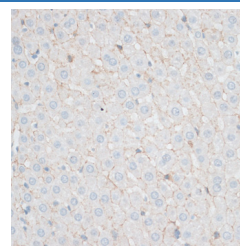
## Recommended Dilution

<b>IHC</b>	1:50-1:200
<b>IF</b>	1:50-1:200

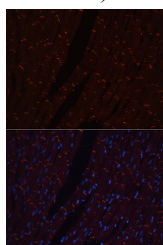
## Data



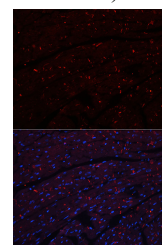
Immunohistochemistry of paraffin-embedded Rat heart using N-Cadherin Polyclonal Antibody at dilution of 1:100 (40x lens).



Immunohistochemistry of paraffin-embedded Rat liver using N-Cadherin Polyclonal Antibody at dilution of 1:100 (40x lens).



Immunofluorescence analysis of Rat heart using N-Cadherin Polyclonal Antibody



Immunofluorescence analysis of Mouse heart using N-Cadherin Polyclonal Antibody

## Preparation & Storage

<b>Storage</b>	Store at -20°C Valid for 12 months. Avoid freeze / thaw cycles.
<b>Shipping</b>	The product is shipped with ice pack, upon receipt, store it immediately at the temperature recommended.

## Background

This gene encodes a classical cadherin and member of the cadherin superfamily. Alternative splicing results in multiple transcript variants, at least one of which encodes a preproprotein is proteolytically processed to generate a calcium-dependent cell adhesion molecule and glycoprotein. This protein plays a role in the establishment of left-right asymmetry, development of the nervous system and the formation of cartilage and bone.

## For Research Use Only