

## Recombinant Human KIR2DL3/NKAT2 Protein (Fc Tag)

**Catalog Number:** PKSH032674

**Note:** Centrifuge before opening to ensure complete recovery of vial contents.

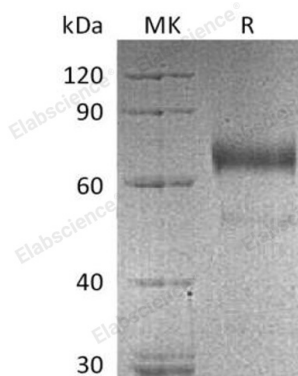
### Description

<b>Species</b>	Human
<b>Source</b>	HEK293 Cells-derived Human KIR2DL3;NKAT2 protein His22-His245, with an C-terminal Fc
<b>Calculated MW</b>	51.7 kDa
<b>Observed MW</b>	70-80 kDa
<b>Accession</b>	P43628
<b>Bio-activity</b>	Not validated for activity

### Properties

<b>Purity</b>	> 95 % as determined by reducing SDS-PAGE.
<b>Endotoxin</b>	< 1.0 EU per µg of the protein as determined by the LAL method.
<b>Storage</b>	Generally, lyophilized proteins are stable for up to 12 months when stored at -20 to -80 °C. Reconstituted protein solution can be stored at 4-8°C for 2-7 days. Aliquots of reconstituted samples are stable at < -20°C for 3 months.
<b>Shipping</b>	This product is provided as lyophilized powder which is shipped with ice packs.
<b>Formulation</b>	Lyophilized from a 0.2 µm filtered solution of PBS, pH 7.4. Normally 5% - 8% trehalose, mannitol and 0.01% Tween 80 are added as protectants before lyophilization.
<b>Reconstitution</b>	Please refer to the specific buffer information in the printed manual. Please refer to the printed manual for detailed information.

### Data



> 95 % as determined by reducing SDS-PAGE.

### Background

Killer-Cell Immunoglobulin-Like Receptors (KIRs) are important cells of the immune system. KIRs are a family of Natural Killer (NK) Cells surface glycoproteins. KIRs control the killing function of these cells by interacting with MHC class I molecules. This interaction allows KIRs to identify virally infected cells or tumor cells by the distinctive low level of Class I MHC on their surface. The majority of KIRs are inhibitory, their recognition of MHC suppresses the cytotoxic activity of their NK cell. Only a limited number of KIRs have the capacity to activate cells. KIR2DL3 is an inhibitory Killer Cell Ig-like Receptor. KIR2DL3 recognizes class I MHC molecules (HLA-Cw1, -Cw3, -Cw7, and Cw8). KIR2DL3 inhibits the activity of NK cells thus preventing cell lysis.

### For Research Use Only