

Recombinant MCM7 Monoclonal Antibody

catalog number: **AN302062L**

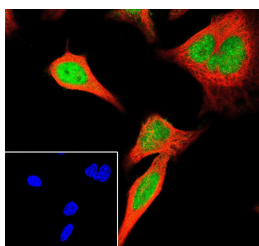
Note: Centrifuge before opening to ensure complete recovery of vial contents.

Description

Reactivity	Human;
Immunogen	Peptide. This information is proprietary to PTMab.
Host	Rabbit
Isotype	IgG, κ
Clone	A782
Purification	Protein A purified
Buffer	PBS, 50% glycerol, 0.05% Proclin 300, 0.05% protein protectant.

Applications Recommended Dilution

WB	1:20000-1:50000
IF	1:100
IP	1:50-1:100



Immunofluorescent analysis of (100% Ice-cold methanol) fixed HeLa cells using anti-MCM7 Monoclonal Antibody at dilution of 1:100.

Preparation & Storage

Storage	Store at -20°C Valid for 12 months. Avoid freeze / thaw cycles.
Shipping	Ice bag

Background

The protein encoded by this gene is one of the highly conserved mini-chromosome maintenance proteins (MCM) that are essential for the initiation of eukaryotic genome replication. The hexameric protein complex formed by the MCM proteins is a key component of the pre-replication complex (pre_RC) and may be involved in the formation of replication forks and in the recruitment of other DNA replication related proteins. The MCM complex consisting of this protein and MCM2, 4 and 6 proteins possesses DNA helicase activity, and may act as a DNA unwinding enzyme. Cyclin D1-dependent kinase, CDK4, is found to associate with this protein, and may regulate the binding of this protein with the tum suppressor protein RB1/RB. Alternatively spliced transcript variants encoding distinct isoforms have been reported.

For Research Use Only