

Recombinant LXR alpha Monoclonal Antibody

catalog number: **E-AB-81580**

Note: Centrifuge before opening to ensure complete recovery of vial contents.

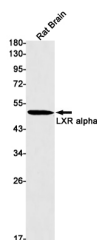
Description

Reactivity	Human;Rat
Immunogen	A synthetic peptide of human LXR alpha
Host	Rabbit
Isotype	IgG
Clone	R07-6A4
Purification	Affinity Purified
Buffer	50mM Tris-Glycine(pH 7.4), 0.15M NaCl, 40% Glycerol, 0.05% stabilizer and 0.05% protective protein.

Applications

Applications	Recommended Dilution
WB	1:500-1:1000
IHC	1:20-1:100

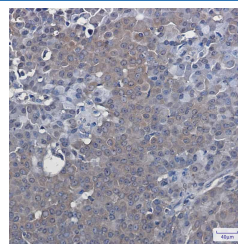
Data



Western blot detection of LXR alpha in Rat Brain lysates using LXR alpha Rabbit mAb(1:1000 diluted). Predicted band size:50kDa.Observed band size:50kDa.

Observed-MW:50 kDa

Calculated-MW:50 kDa



Immunohistochemistry of LXR alpha in paraffin-embedded Human breast cancer tissue using LXR alpha Rabbit mAb at dilution 1:50

Preparation & Storage

Storage	Store at -20°C Valid for 12 months. Avoid freeze / thaw cycles.
Shipping	The product is shipped with ice pack,upon receipt,store it immediately at the temperature recommended.

Background

NR1H3,also known as LXRA,is a liver X receptors,which form a subfamily of the nuclear receptor superfamily and are key regulators of macrophage function,controlling transcriptional programs involved in lipid homeostasis and inflammation. It's also a ligand-activated LXRs and forms heterodimers with retinoid X receptor,then participates in regulating expression of target genes containing LXR response elements.

For Research Use Only