

Recombinant Human PKC epsilon/PKCE Protein (His Tag)

Catalog Number: PKSH032964

Note: Centrifuge before opening to ensure complete recovery of vial contents.

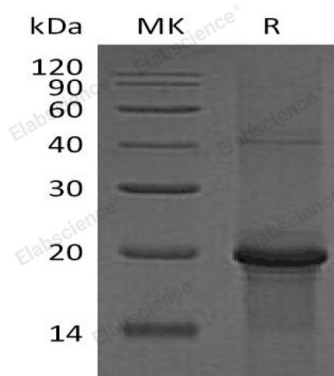
Description

Species	Human
Source	E.coli-derived Human PKC epsilon; PKCE protein Gln580-Pro737, with an C-terminal His
Calculated MW	19.6 kDa
Observed MW	20 kDa
Accession	Q02156
Bio-activity	Not validated for activity

Properties

Purity	> 90 % as determined by reducing SDS-PAGE.
Concentration	Subject to label value.
Endotoxin	< 1.0 EU per µg of the protein as determined by the LAL method.
Storage	Store at < -20°C, stable for 6 months. Please minimize freeze-thaw cycles.
Shipping	This product is provided as liquid. It is shipped at frozen temperature with blue ice/gel packs. Upon receipt, store it immediately at < -20°C.
Formulation	Supplied as a 0.2 µm filtered solution of 20mM PB, 150mM NaCl, 1mM DTT, pH 7.4.

Data



> 90 % as determined by reducing SDS-PAGE.

Background

Protein Kinase C Epsilon type is a member of the serine- and threonine-specific protein kinase family that can be activated by calcium and the second messenger diacylglycerol. Protein Kinase C Epsilon contains these domains: one AGC-kinase C-terminal domain; one C2 domain; one protein kinase domain and two phorbol-ester/DAG-type zinc finger s. Protein Kinase C Epsilon phosphorylate a variety of protein targets and has been identified to participate in diverse cellular signaling pathways. It has many different cellular functions; such as neuron channel activation; apoptosis; cardioprotection from ischemia; heat shock response; as well as insulin exocytosis. Protein Kinase C Epsilon also serves as the receptor for phorbol esters; a class of tumor promoters.

For Research Use Only