

## Recombinant Human IL-12 p40/IL-12B Protein

**Catalog Number:** PKSH032004

**Note:** Centrifuge before opening to ensure complete recovery of vial contents.

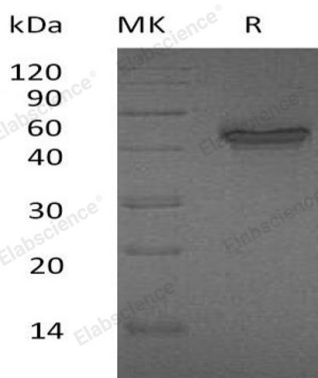
### Description

<b>Species</b>	Human
<b>Source</b>	HEK293 Cells-derived Human IL-12 p40;IL-12B protein Ile23-Ser328
<b>Calculated MW</b>	34.6 kDa
<b>Observed MW</b>	40-47 kDa
<b>Accession</b>	P29460
<b>Bio-activity</b>	Not validated for activity

### Properties

<b>Purity</b>	> 95 % as determined by reducing SDS-PAGE.
<b>Endotoxin</b>	< 1.0 EU per µg of the protein as determined by the LAL method.
<b>Storage</b>	Generally, lyophilized proteins are stable for up to 12 months when stored at -20 to -80 °C. Reconstituted protein solution can be stored at 4-8°C for 2-7 days. Aliquots of reconstituted samples are stable at < -20°C for 3 months.
<b>Shipping</b>	This product is provided as lyophilized powder which is shipped with ice packs.
<b>Formulation</b>	Lyophilized from a 0.2 µm filtered solution of PBS, pH 7.4. Normally 5% - 8% trehalose, mannitol and 0.01% Tween 80 are added as protectants before lyophilization. Please refer to the specific buffer information in the printed manual.
<b>Reconstitution</b>	Please refer to the printed manual for detailed information.

### Data



> 95 % as determined by reducing SDS-PAGE.

### Background

Interleukin-12 subunit beta (IL-12B) belongs to the type I cytokine receptor family. It contains 1 fibronectin type-III domain and 1 Ig-like C2-type domain. IL-12B is a cytokine that acts on T and natural killer cells, and has a broad array of biological activities. IL-12 is a disulfide-linked heterodimer composed of the 40 kD cytokine receptor encoded by IL12B and a 35 kD subunit encoded by IL12A. IL12 is expressed by activated macrophages that serve as an essential inducer of Th1 cells development. It has been found to be important for sustaining a sufficient number of memory/effector Th1 cells to mediate long-term protection to an intracellular pathogen.

### For Research Use Only

Toll-free: 1-888-852-8623  
Web: [www.elabscience.com](http://www.elabscience.com)

Tel: 1-832-243-6086  
Email: [techsupport@elabscience.com](mailto:techsupport@elabscience.com)

Fax: 1-832-243-6017