

ATG7 Monoclonal Antibody

catalog number: E-AB-22151

Note: Centrifuge before opening to ensure complete recovery of vial contents.

Description

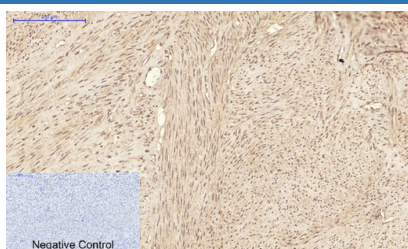
Reactivity	Human;Mouse;Rat
Immunogen	Recombinant Protein of ATG7
Host	Mouse
Isotype	IgG
Clone	1A1
Purification	Protein A purification
Conjugation	Unconjugated
Buffer	Phosphate buffered solution, pH 7.4, containing 0.05% stabilizer, 0.5% protein protectant and 50% glycerol.

Applications

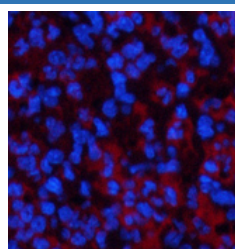
Recommended Dilution

IHC	1:50-300
IF	1:50-1:200

Data



Immunohistochemistry of paraffin-embedded Human uterus tissue using ATG7 Monoclonal Antibody at dilution of 1:200.



Immunofluorescence analysis of Mouse spleen tissue using ATG7 Monoclonal Antibody at dilution of 1:200.

Preparation & Storage

Storage	Store at -20°C Valid for 12 months. Avoid freeze / thaw cycles.
Shipping	The product is shipped with ice pack, upon receipt, store it immediately at the temperature recommended.

Background

ATG7 (Autophagy Related 7) is a Protein Coding gene. Among its related pathways are Autophagy Pathway and Innate Immune System. GO annotations related to this gene include protein homodimerization activity and ubiquitin activating enzyme activity. This gene encodes an E1-like activating enzyme that is essential for autophagy and cytoplasmic to vacuole transport. The encoded protein is also thought to modulate p53-dependent cell cycle pathways during prolonged metabolic stress. It has been associated with multiple functions, including axon membrane trafficking, axonal homeostasis, mitophagy, adipose differentiation, and hematopoietic stem cell maintenance. Alternative splicing results in multiple transcript variants.

For Research Use Only