

Recombinant Human MAP1LC3A Protein (His Tag)

Catalog Number: PKSH032755

Note: Centrifuge before opening to ensure complete recovery of vial contents.

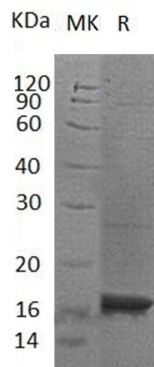
Description

Species	Human
Source	E.coli-derived Human MAP1LC3A protein Met 1-Phe121, with an C-terminal His
Calculated MW	15.3 kDa
Observed MW	18 kDa
Accession	Q9H492
Bio-activity	Not validated for activity

Properties

Purity	> 95 % as determined by reducing SDS-PAGE.
Concentration	Subject to label value.
Endotoxin	< 1.0 EU per µg of the protein as determined by the LAL method.
Storage	Store at < -20°C, stable for 6 months. Please minimize freeze-thaw cycles.
Shipping	This product is provided as liquid. It is shipped at frozen temperature with blue ice/gel packs. Upon receipt, store it immediately at < - 20°C.
Formulation	Supplied as a 0.2 µm filtered solution of 20mM Tris-HCl, 20% Glycerol, 100mM NaCl, pH 8.0.

Data



> 95 % as determined by reducing SDS-PAGE.

Background

Microtubule-Associated Proteins 1A/1B Light Chain 3A (MAP1LC3A) belongs to the MAP1 LC3 family. MAP1LC3A is found most abundantly in the heart, brain, liver, skeletal muscle, and testis. But it is absent in the thymus and peripheral blood leukocytes. MAP1LC3A is thought to take part in the formation of autophagosomal vacuoles and is one of the light chain subunits that functions together with both MAP1A and/or MAP1B. In addition, MAP1A has an important part in neuronal development and in maintaining the balance between neuronal plasticity and rigidity.