

Note: Centrifuge before opening to ensure complete recovery of vial contents.

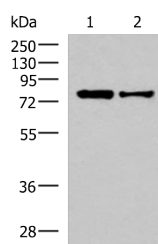
Description

Reactivity	Human, Mouse, Rat
Immunogen	Synthetic peptide of human KHSRP
Host	Rabbit
Isotype	IgG
Purification	Antigen affinity purification
Conjugation	Unconjugated
Formulation	PBS with 0.05% NaN ₃ and 40% Glycerol, pH7.4

Applications Recommended Dilution

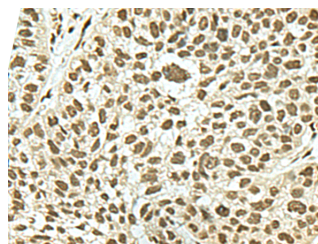
WB	1:1000-1:5000
IHC	1:50-1:300
ELISA	1:5000-1:10000

Data



Western blot analysis of HepG2 and Hela cell lysates using KHSRP Polyclonal Antibody at dilution of 1:1000

Observed MW: Refer to figures
Calculated Mw: 73 kDa



Immunohistochemistry of paraffin-embedded Human esophagus cancer tissue using KHSRP Polyclonal Antibody at dilution of 1:50 (x200)

Preparation & Storage

Storage Store at -20°C. Avoid freeze / thaw cycles.

Background

The KHSRP gene encodes a multifunctional RNA-binding protein implicated in a variety of cellular processes, including transcription, alternative pre-mRNA splicing, and mRNA localization. KHSRP (KH-Type Splicing Regulatory Protein) is a Protein Coding gene. Diseases associated with KHSRP include Ataxia, Cerebellar, Cayman Type. Among its related pathways are CDK-mediated phosphorylation and removal of Cdc6 and Gene Expression. GO annotations related to this gene include nucleic acid binding and RNA binding. An important paralog of this gene is FUBP1.

For Research Use Only

A Reliable Research Partner in Life Science and Medicine

Toll-free: 1-888-852-8623

Web: www.elabscience.com

Tel: 1-832-243-6086

Email: techsupport@elabscience.com

Fax: 1-832-243-6017