

Phospho-CXCR4 (Ser339) Polyclonal Antibody

catalog number: E-AB-21282

Note: Centrifuge before opening to ensure complete recovery of vial contents.

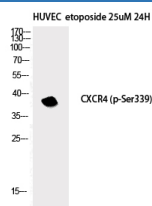
Description

Reactivity	Human;Mouse;Rat;Monkey
Immunogen	Synthesized peptide derived from human Fusin around the phosphorylation site of Ser339
Host	Rabbit
Isotype	IgG
Purification	Affinity purification
Buffer	Phosphate buffered solution, pH 7.4, containing 0.05% stabilizer, 0.5% protein protectant and 50% glycerol.

Applications

Applications	Recommended Dilution
WB	1:500-1:2000
IHC	1:100-1:300
IF	1:200-1:1000

Data



Western Blot analysis of HuvEc etoposide 25uM 24h cells
with Phospho-CXCR4 (Ser339) Polyclonal Antibody

Observed-MW:38 kDa

Calculated-MW:40 kDa

Preparation & Storage

Storage	Store at -20°C Valid for 12 months. A void freeze / thaw cycles.
Shipping	The product is shipped with ice pack,upon receipt,store it immediately at the temperature recommended.

Background

This gene encodes a CXC chemokine receptor specific for stromal cell-derived factor-1. The protein has 7 transmembrane regions and is located on the cell surface. It acts with the CD4 protein to support HIV entry into cells and is also highly expressed in breast cancer cells. Mutations in this gene have been associated with WHIM (warts, hypogammaglobulinemia, infections, and myelokathexis) syndrome. Alternate transcriptional splice variants, encoding different isoforms, have been characterized.

For Research Use Only