

# ZWILCH Polyclonal Antibody

catalog number: E-AB-53208

**Note:** Centrifuge before opening to ensure complete recovery of vial contents.

## Description

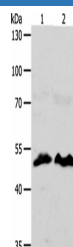
|                     |  |
|---------------------|--|
| <b>Reactivity</b>   | Human;Mouse  |
| <b>Immunogen</b>    | Synthetic peptide of human ZWILCH  |
| <b>Host</b>         | Rabbit   |
| <b>Isotype</b>      | IgG  |
| <b>Purification</b> | Antigen affinity purification  |
| <b>Conjugation</b>  | Unconjugated   |
| <b>buffer</b>       | Phosphate buffered solution, pH 7.4, containing 0.05% stabilizer and 50% glycerol. |

## Applications

## Recommended Dilution

|           |               |
|-----------|---------------|
| <b>WB</b> | 1:1000-1:5000 |
|-----------|---------------|

## Data



Western blot analysis of HT29 cells hela cells using ZWILCH Polyclonal Antibody at dilution of 1:1750

**Observed-MV:Refer to figures**

**Calculated-MV:67 kDa**

## Preparation & Storage

|                 |  |
|-----------------|--|
| <b>Storage</b>  | Store at -20°C Valid for 12 months. Avoid freeze / thaw cycles.  |
| <b>Shipping</b> | The product is shipped with ice pack,upon receipt,store it immediately at the temperature recommended. |

## Background

This protein is essential component of the mitotic checkpoint, which prevents cells from prematurely exiting mitosis. And it is required for the assembly of the dynein-dynactin and MAD1-MAD2 complexes onto kinetochores. ZWILCH gene is deleted in a patient suffering from colorectal cancer with chromosomal instability.

## For Research Use Only