

## PALLD Polyclonal Antibody

**catalog number: E-AB-90404**

**Note:** Centrifuge before opening to ensure complete recovery of vial contents.

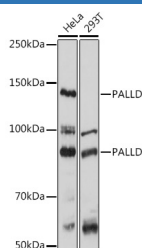
### Description

<b>Reactivity</b>	Human;Mouse;Rat
<b>Immunogen</b>	Recombinant fusion protein of human PALLD
<b>Host</b>	Rabbit
<b>Isotype</b>	IgG
<b>Purification</b>	Affinity purification
<b>Buffer</b>	Phosphate buffered solution, pH 7.4, containing 0.05% stabilizer and 50% glycerol.

### Applications

Applications	Recommended Dilution
<b>WB</b>	1:500-1:2000
<b>IP</b>	50-1:200
<b>IHC</b>	1:50-1:200
<b>IF</b>	1:50-1:200

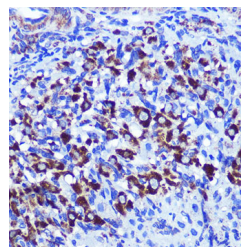
### Data



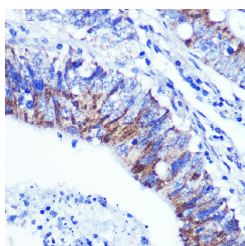
Western blot analysis of extracts of various cell lines using PALLD Polyclonal Antibody at 1:1000 dilution.

**Observed-MW:150 kDa**

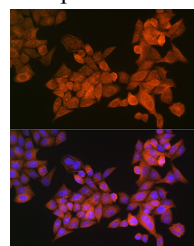
**Calculated-MW:42 kDa/58 kDa/73 kDa/85-150 kDa**



Immunohistochemistry of paraffin-embedded rat ovary using PALLD Polyclonal Antibody at dilution of 1:100 (40x lens). Perform microwave antigen retrieval with 10 mM PBS buffer pH 7.2 before commencing with IHC staining protocol.

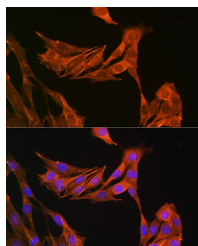


Immunohistochemistry of paraffin-embedded human colon carcinoma using PALLD Polyclonal Antibody at dilution of 1:100 (40x lens). Perform microwave antigen retrieval with 10 mM PBS buffer pH 7.2 before commencing with IHC staining protocol.

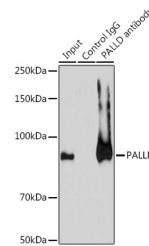


Immunofluorescence analysis of HeLa cells using PALLD Polyclonal Antibody at dilution of 1:100 (40x lens). Blue: DAPI for nuclear staining.

### For Research Use Only



Immunofluorescence analysis of NIH-3T3 cells using PALLD Polyclonal Antibody at dilution of 1:100 (40x lens).  
Blue: DAPI for nuclear staining.



Immunoprecipitation analysis of 200ug extracts of A-549 cells using 3ug PALLD Polyclonal Antibody. Western blot was performed from the immunoprecipitate using PALLD Polyclonal Antibody at a dilution of 1:1000.

**Observed-MW: 150 kDa**

**Calculated-MW: 42 kDa/58 kDa/73 kDa/85-150 kDa**

### Preparation & Storage

#### Storage

Store at -20°C Valid for 12 months. Avoid freeze / thaw cycles.

#### Shipping

The product is shipped with ice pack, upon receipt, store it immediately at the temperature recommended.

### Background

This gene encodes a cytoskeletal protein that is required for organizing the actin cytoskeleton. The protein is a component of actin-containing microfilaments, and it is involved in the control of cell shape, adhesion, and contraction. Polymorphisms in this gene are associated with a susceptibility to pancreatic cancer type 1, and also with a risk for myocardial infarction. Alternative splicing results in multiple transcript variants.

### For Research Use Only