

SLTM Polyclonal Antibody

Catalog Number:E-AB-13666



Note: Centrifuge before opening to ensure complete recovery of vial contents.

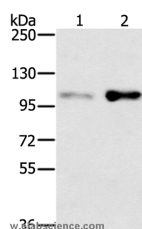
Description

Reactivity	Human,Mouse
Immunogen	Synthetic peptide of human SLTM
Host	Rabbit
Isotype	IgG
Purification	Affinity purification
Conjugation	Unconjugated
Formulation	PBS with 0.05% sodium azide and 50% glycerol, PH7.4

Applications Recommended Dilution

WB	1:500-1:2000
-----------	--------------

Data



Western Blot analysis of HT-29 and 293T cell using
SLTM Polyclonal Antibody at dilution of 1:400
Calculated Mw:117kDa

Preparation & Storage

Storage Store at -20°C. Avoid freeze / thaw cycles.

Background

SLTM (SAFB-like, transcription modulator), also known as MET (modulator of estrogen-induced transcription), is a 1,034 amino acid protein that localizes to punctate structures within the nucleus and contains one SAP domain and one RNA recognition motif. When expressed at high levels, SLTM functions to inhibit transcription and may, ultimately, lead to apoptosis. Multiple isoforms of SLTM exist due to alternative splicing events. The gene encoding SLTM maps to human chromosome 15, which houses over 700 genes and comprises nearly 3% of the human genome.

For Research Use Only

A Reliable Research Partner in Life Science and Medicine

Toll-free: 1-888-852-8623

Web: www.elabscience.com

Tel: 1-832-243-6086

Email: techsupport@elabscience.com

Fax: 1-832-243-6017