

# CAPN15 Polyclonal Antibody

catalog number: E-AB-17763

**Note:** Centrifuge before opening to ensure complete recovery of vial contents.

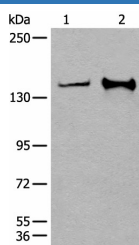
## Description

|                     |  |
|---------------------|--|
| <b>Reactivity</b>   | Human;Mouse  |
| <b>Immunogen</b>    | Synthetic peptide of human CAPN15  |
| <b>Host</b>         | Rabbit   |
| <b>Isotype</b>      | IgG  |
| <b>Purification</b> | Antigen affinity purification  |
| <b>Conjugation</b>  | Unconjugated   |
| <b>buffer</b>       | Phosphate buffered solution, pH 7.4, containing 0.05% stabilizer and 50% glycerol. |

## Applications

| Applications | Recommended Dilution |
|--------------|----------------------|
| <b>WB</b>    | 1:500-1:2000         |
| <b>IHC</b>   | 1:40-1:200           |

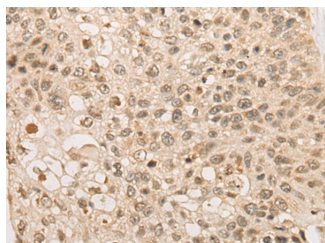
## Data



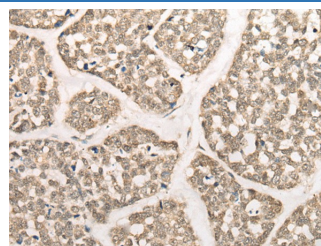
Western blot analysis of HeLa and A172 cell lysates using CAPN15 Polyclonal Antibody at dilution of 1:400

**Observed-MV:Refer to figures**

**Calculated-MV:117 kDa**



Immunohistochemistry of paraffin-embedded Human lung cancer tissue using CAPN15 Polyclonal Antibody at dilution of 1:50( $\times 200$ )



Immunohistochemistry of paraffin-embedded Human esophagus cancer tissue using CAPN15 Polyclonal Antibody at dilution of 1:50( $\times 200$ )

## Preparation & Storage

|                 |  |
|-----------------|--|
| <b>Storage</b>  | Store at $-20^{\circ}\text{C}$ Valid for 12 months. Avoid freeze / thaw cycles.                        |
| <b>Shipping</b> | The product is shipped with ice pack,upon receipt,store it immediately at the temperature recommended. |

## Background

This gene encodes a protein containing zinc-finger-like repeats and a calpain-like protease domain. The encoded protein may function as a transcription factor, RNA-binding protein, or in protein-protein interactions during visual system development.

## For Research Use Only