

PE/Elab Fluor® 594 Anti-Mouse CD146 Antibody[ME-9F1]

Catalog Number: E-AB-F1395P

Note: Centrifuge before opening to ensure complete recovery of vial contents.

Description

Reactivity	Mouse
Host	Rat
Isotype	Rat IgG2a, κ
Clone No.	ME-9F1
Isotype Control	PE/Elab Fluor® 594 Rat IgG2a, κ Isotype Control[2A3] [Product E-AB-F09832P]
Conjugation	PE/Elab Fluor® 594
Conjugation Information	PE/Elab Fluor® 594 is designed to be excited by the blue (488 nm), Green (532 nm) and yellow-green (561 nm) lasers and detected using an optical filter centered near 620 nm (e.g., a 610/20 nm bandpass filter).
Storage Buffer	Phosphate buffered solution, pH 7.2, containing 0.09% stabilizer and 1% protein protectant

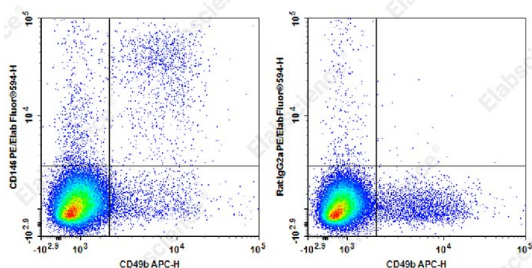
Applications

Recommended usage

FCM

Each lot of this antibody is quality control tested by flow cytometric analysis. **The amount of the reagent is suggested to be used 5 μ L of antibody per test (million cells in 100 μ L staining volume or per 100 μ L of whole blood).** Please check your vial before the experiment. Since applications vary, the appropriate dilutions must be determined for individual use.

Data



Staining of C57BL/6 murine splenocytes cells with APC Anti-Mouse CD49b Antibody and PE/Elab Fluor® 594 Anti-Mouse NKG2A/C/E Antibody[ME-9F1] (left) or PE/Elab Fluor® 594 Rat IgG2a, κ Isotype Control (right). Total viable cells were used for analysis.

Preparation & Storage

Storage	Keep as concentrated solution. This product can be stored at 2-8°C for 12 months. Please protected from prolonged exposure to light and do not freeze.
Shipping	Ice bag

Antigen Information

Alternate Names	S-Endo 1 antigen;MUC18;MCAM;Me1-CAM;A32 antigen
-----------------	---

For Research Use Only

Toll-free: 1-888-852-8623
Web: www.elabscience.com

Tel: 1-832-243-6086
Email: techsupport@elabscience.com

Fax: 1-832-243-6017

Rev. V1.6

Uniprot ID

P10810

Gene ID

84004

Background

CD146, also known as melanoma cell adhesion molecule (MCAM or Mel-CAM), MUC18, S-Endo1, and A32 antigen, is an integral membrane glycoprotein that belongs to the Ig superfamily. CD146 is strongly expressed by murine vascular endothelial cells. It is expressed on about 30% of neutrophils and 60% of NK cells. Unlike in humans, CD146 is undetectable on monocytes, dendritic cells, T cells, NKT cells, B cells, or smooth muscle cells in mouse. It has been reported that an increase in CD146 expression is associated with NK cell maturation. Combined with using CD27 and CD11b staining, CD146 may be an alternative marker to detect final stages of NK cell maturation and define NK cell subsets. CD146+ NK cells were found to be less cytotoxic and to produce less IFN γ than CD146- NK cells upon stimulation with target cells or activating antibodies. The role of CD146 on NK cell migration has yet to be investigated. The identification of CD146 ligand(s) will be crucial to address this issue.