

## POMC Polyclonal Antibody

catalog number: **E-AB-53251**

**Note:** Centrifuge before opening to ensure complete recovery of vial contents.

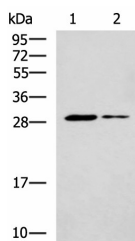
### Description

<b>Reactivity</b>	Human;Mouse;Rat
<b>Immunogen</b>	Synthetic peptide of human POMC
<b>Host</b>	Rabbit
<b>Isotype</b>	IgG
<b>Purification</b>	Antigen affinity purification
<b>Buffer</b>	Phosphate buffered solution, pH 7.4, containing 0.05% stabilizer and 50% glycerol.

### Applications

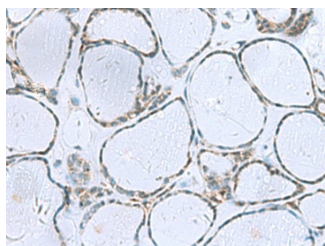
Applications	Recommended Dilution
<b>WB</b>	1:500-1:2000
<b>IHC</b>	1:25-1:50

### Data

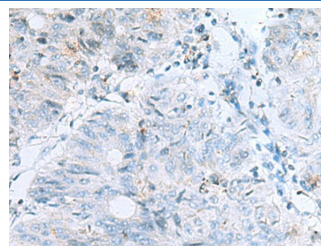


Western blot analysis of Mouse liver tissue and Mouse skeletal muscle tissue lysates using POMC Polyclonal Antibody at dilution of 1:800

**Observed-MW:Refer to figures**  
**Calculated-MW:29 kDa**



Immunohistochemistry of paraffin-embedded Human thyroid cancer tissue using POMC Polyclonal Antibody at dilution of 1:35(×200)



Immunohistochemistry of paraffin-embedded Human colorectal cancer tissue using POMC Polyclonal Antibody at dilution of 1:35(×200)

### Preparation & Storage

<b>Storage</b>	Store at -20°C Valid for 12 months. Avoid freeze / thaw cycles.
<b>Shipping</b>	The product is shipped with ice pack,upon receipt,store it immediately at the temperature recommended.

### Background

### For Research Use Only

Pro-opiomelanocortin (POMC) is a prohormone that encodes multiple smaller peptide hormones within its structure. POMC plays important roles in many pathological and physiological processes, including regulating energy metabolism, immune reactions, and sexual functions. POMC expression differs quantitatively and qualitatively among most normal tissues. The large molecule of POMC is the source of several important biologically active substances. POMC can be cleaved enzymatically into the following peptides:  $\delta$  NPP,  $\gamma$ -MSH, ACTH,  $\alpha$ -MSH, CLIP, Lipotropin  $\beta$ , Lipotropin  $\gamma$ ,  $\beta$ -MSH,  $\beta$  endorphin and Met-enkephalin.

## For Research Use Only

Toll-free: 1-888-852-8623  
Web: [www.elabscience.com](http://www.elabscience.com)

Tel: 1-832-243-6086  
Email: [techsupport@elabscience.com](mailto:techsupport@elabscience.com)

Fax: 1-832-243-6017

Rev. V1.7