

WDR1 Polyclonal Antibody

Catalog Number: E-AB-53211



Note: Centrifuge before opening to ensure complete recovery of vial contents.

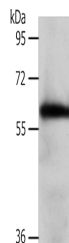
Description

| | |
|---------------------|---------------------------------------------------------|
| Reactivity | Human, Mouse, Rat |
| Immunogen | Synthetic peptide of human WDR1 |
| Host | Rabbit |
| Isotype | IgG |
| Purification | Antigen affinity purification |
| Conjugation | Unconjugated |
| Formulation | PBS with 0.05% NaN ₃ and 40% Glycerol, pH7.4 |

Applications Recommended Dilution

| | |
|--------------|---------------|
| WB | 1:500-1:2000 |
| ELISA | 1:1000-1:5000 |

Data



Western blot analysis of Mouse brain tissue using WDR1 Polyclonal Antibody at dilution of 1:1000

Observed MW: Refer to figures

Calculated Mw: 66 kDa

Preparation & Storage

Storage Store at -20°C. Avoid freeze / thaw cycles.

Background

This gene encodes a protein containing 9 WD repeats. WD repeats are approximately 30- to 40-amino acid domains containing several conserved residues, mostly including a trp-asp at the C-terminal end. WD domains are involved in protein-protein interactions. The encoded protein may help induce the disassembly of actin filaments. Two transcript variants encoding different isoforms have been found for this gene.

For Research Use Only

A Reliable Research Partner in Life Science and Medicine

Toll-free: 1-888-852-8623

Web: www.elabscience.com

Tel: 1-832-243-6086

Email: techsupport@elabscience.com

Fax: 1-832-243-6017