

# GKN1 Polyclonal Antibody

Catalog Number: E-AB-19492



**Note:** Centrifuge before opening to ensure complete recovery of vial contents.

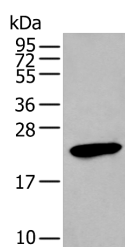
## Description

<b>Reactivity</b>	Human
<b>Immunogen</b>	Synthetic peptide of human GKN1
<b>Host</b>	Rabbit
<b>Isotype</b>	IgG
<b>Purification</b>	Antigen affinity purification
<b>Conjugation</b>	Unconjugated
<b>Formulation</b>	PBS with 0.05% NaN <sub>3</sub> and 40% Glycerol, pH7.4

## Applications Recommended Dilution

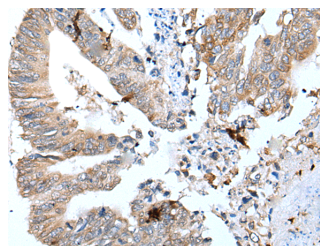
<b>WB</b>	1:500-1:2000
<b>IHC</b>	1:25-1:100
<b>ELISA</b>	1:5000-1:10000

## Data



Western blot analysis of Human stomach tissue lysate using GKN1 Polyclonal Antibody at dilution of 1:250

**Observed MW: Refer to figures**  
**Calculated Mw: 22 kDa**



Immunohistochemistry of paraffin-embedded Human colorectal cancer tissue using GKN1 Polyclonal Antibody at dilution of 1:30 (x200)

## Preparation & Storage

**Storage** Store at -20°C. Avoid freeze / thaw cycles.

## Background

Gastrokine 1 (GKN1), a stomach-specific protein also known as 18 kDa antrum mucosa protein (AMP-18) or foveolin, belongs to the gastrokine family of gastric mucus cell-secreted proteins. The human GKN1 gene has been localized in a region of chromosome 2p13 of about 6 kb and contains 6 exons. GKN1 is expressed only in normal human stomach, but is absent from gastric adenocarcinomas, gastro-esophageal adenocarcinoma cell lines, and other normal and tumor gastro-intestinal tissues. GKN1 may play an important role in normal gastric function and may be a gastric tumour suppressor.

## For Research Use Only

A Reliable Research Partner in Life Science and Medicine

Toll-free: 1-888-852-8623

Web: [www.elabscience.com](http://www.elabscience.com)

Tel: 1-832-243-6086

Email: [techsupport@elabscience.com](mailto:techsupport@elabscience.com)

Fax: 1-832-243-6017