

## Recombinant Human UBE2S Protein (GST Tag)

**Catalog Number:** PKSH033189

**Note:** Centrifuge before opening to ensure complete recovery of vial contents.

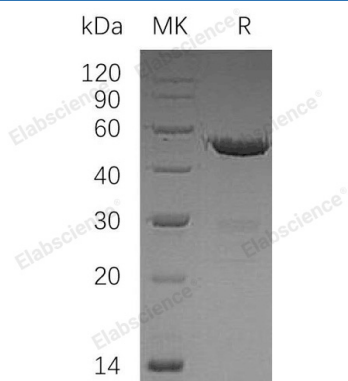
### Description

<b>Species</b>	Human
<b>Source</b>	E.coli-derived Human UBE2S protein Met 1-Leu222, with an N-terminal GST
<b>Calculated MW</b>	50.1 kDa
<b>Observed MW</b>	50 kDa
<b>Accession</b>	Q16763
<b>Bio-activity</b>	Not validated for activity

### Properties

<b>Purity</b>	> 95 % as determined by reducing SDS-PAGE.
<b>Concentration</b>	Subject to label value.
<b>Endotoxin</b>	< 1.0 EU per µg of the protein as determined by the LAL method.
<b>Storage</b>	Store at < -20°C, stable for 6 months. Please minimize freeze-thaw cycles.
<b>Shipping</b>	This product is provided as liquid. It is shipped at frozen temperature with blue ice/gel packs. Upon receipt, store it immediately at < -20°C.
<b>Formulation</b>	Supplied as a 0.2 µm filtered solution of 50mM HEPES, 150mM NaCl, 2mM DTT, 10% Glycerol, pH 7.5.

### Data



> 95 % as determined by reducing SDS-PAGE.

### Background

Ubiquitin-Conjugating Enzyme E2 S (UBE2S) is a member of the Ubiquitin-Conjugating Enzyme family. UBE2S interacts with CDC20, FZR1/CDH1 and VHL. UBE2S can form a thiol ester linkage with Ubiquitin in an Ubiquitin Activating Enzyme-Dependent manner, a characteristic property of Ubiquitin Carrier Proteins. UBE2S acts as an essential factor of the Anaphase Promoting Complex/Cyclosome, a cell cycle-regulated Ubiquitin ligase that controls progression through mitosis. UBE2S is also involved in ubiquitination and subsequent degradation of VHL, resulting in an accumulation of HIF1A.

### For Research Use Only

Toll-free: 1-888-852-8623  
Web: [www.elabscience.com](http://www.elabscience.com)

Tel: 1-832-243-6086  
Email: [techsupport@elabscience.com](mailto:techsupport@elabscience.com)

Fax: 1-832-243-6017