

NUTF2 Polyclonal Antibody

Catalog Number:E-AB-18888



Note: Centrifuge before opening to ensure complete recovery of vial contents.

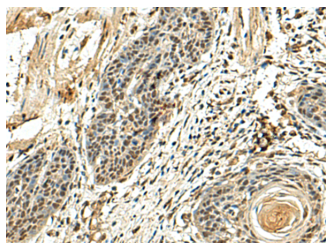
Description

Reactivity	Human, Mouse, Rat
Immunogen	Fusion protein of human NUTF2
Host	Rabbit
Isotype	IgG
Purification	Antigen affinity purification
Conjugation	Unconjugated
Formulation	PBS with 0.05% NaN ₃ and 40% Glycerol,pH7.4

Applications Recommended Dilution

IHC	1:100-1:300
ELISA	1:5000-1:10000

Data



Immunohistochemistry of paraffin-embedded Human esophagus cancer tissue using NUTF2 Polyclonal Antibody at dilution of 1:110(×200)

Preparation & Storage

Storage Store at -20°C. Avoid freeze / thaw cycles.

Background

NUTF2 (nuclear transport factor 2), also named as NTF2, is a cytosolic protein responsible for nuclear import of Ran, a small Ras-like GTPase involved in a number of critical cellular processes, including cell cycle regulation, chromatin organization during mitosis, reformation of the nuclear envelope following mitosis, and controlling the directionality of nucleocytoplasmic transport. Nucleocytoplasmic translocation of NTF2 is regulated in mammalian cells, and may involve a tyrosine and/or threonine kinase-dependent signal transduction mechanism(s). The MW of this protein is 14 kDa, and this antibody specially recognises the 14 kDa protein.

For Research Use Only

A Reliable Research Partner in Life Science and Medicine

Toll-free: 1-888-852-8623

Web: www.elabscience.com

Tel: 1-832-243-6086

Email: techsupport@elabscience.com

Fax: 1-832-243-6017