

EIF3L Polyclonal Antibody

catalog number: E-AB-63116

Note: Centrifuge before opening to ensure complete recovery of vial contents.

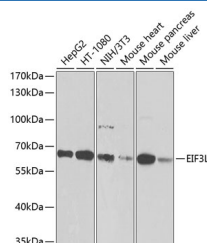
Description

Reactivity	Human;Mouse;Rat
Immunogen	Recombinant fusion protein of human EIF3L (NP_057175.1).
Host	Rabbit
Isotype	IgG
Purification	Affinity purification
Buffer	Phosphate buffered solution, pH 7.4, containing 0.05% stabilizer and 50% glycerol.

Applications

Applications	Recommended Dilution
WB	1:1000-1:4000
IHC	1:50-1:200

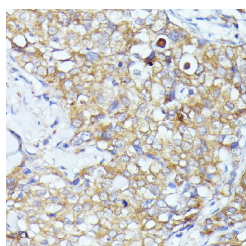
Data



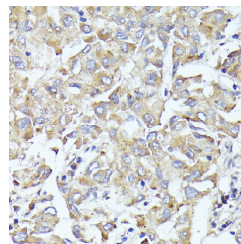
Western blot analysis of extracts of various cell lines using EIF3L Polyclonal Antibody at dilution of 1:1000.

Observed-MW:67 kDa

Calculated-MW:61 kDa/66 kDa



Immunohistochemistry of paraffin-embedded Human mammary cancer using EIF3L Polyclonal Antibody at dilution of 1:100 (40x lens).



Immunohistochemistry of paraffin-embedded Human liver cancer using EIF3L Polyclonal Antibody at dilution of 1:100 (40x lens).

Preparation & Storage

Storage	Store at -20°C Valid for 12 months. Avoid freeze / thaw cycles.
Shipping	The product is shipped with ice pack, upon receipt, store it immediately at the temperature recommended.

Background

For Research Use Only

EIF3L (Eukaryotic Translation Initiation Factor 3 Subunit L) is a Protein Coding gene. Among its related pathways are Viral mRNA Translation and Activation of the mRNA upon binding of the cap-binding complex and eIFs, and subsequent binding to 43S. GO annotations related to this gene include poly(A) RNA binding and translation initiation factor activity.