

## NBR1 Monoclonal Antibody

catalog number: **E-AB-22148**

**Note:** Centrifuge before opening to ensure complete recovery of vial contents.

### Description

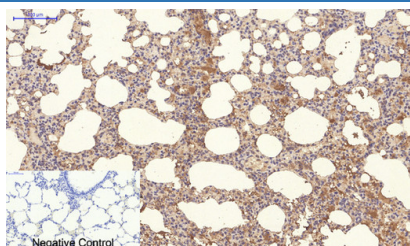
<b>Reactivity</b>	Human;Mouse;Rat
<b>Immunogen</b>	Recombinant Protein of NBR1
<b>Host</b>	Mouse
<b>Isotype</b>	IgG
<b>Clone</b>	4C6
<b>Purification</b>	Protein A purification
<b>Buffer</b>	Phosphate buffered solution, pH 7.4, containing 0.05% stabilizer, 0.5% protein protectant and 50% glycerol.

### Applications

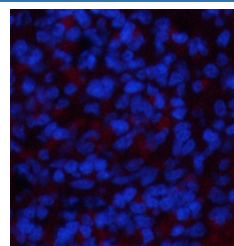
### Recommended Dilution

<b>IHC</b>	1:50-300
<b>IF</b>	1:50-1:200

### Data



Immunohistochemistry of paraffin-embedded Rat lung tissue using NBR1 Monoclonal Antibody at dilution of 1:200.



Immunofluorescence analysis of Rat spleen tissue using NBR1 Monoclonal Antibody at dilution of 1:200.

### Preparation & Storage

<b>Storage</b>	Store at -20°C Valid for 12 months. Avoid freeze / thaw cycles.
<b>Shipping</b>	The product is shipped with ice pack, upon receipt, store it immediately at the temperature recommended.

### Background

The protein encoded by this gene was originally identified as an ovarian tumor antigen monitored in ovarian cancer. The encoded protein contains a B-box/coiled-coil motif, which is present in many genes with transformation potential. It functions as a specific autophagy receptor for the selective autophagic degradation of peroxisomes by forming intracellular inclusions with ubiquitylated autophagic substrates. This gene is located on a region of chromosome 17q21.1 that is in close proximity to the BRCA1 tumor suppressor gene. Alternative splicing of this gene results in multiple transcript variants. NBR1 (NBR1, Autophagy Cargo Receptor) is a Protein Coding gene. Diseases associated with NBR1 include Inclusion Body Myositis and Synucleinopathy. Among its related pathways are Mitophagy - animal. GO annotations related to this gene include ubiquitin binding and mitogen-activated protein kinase binding.

### For Research Use Only