

Recombinant Human UBE2I/UBC9 Protein (GST Tag)

Catalog Number: PKSH033308

Note: Centrifuge before opening to ensure complete recovery of vial contents.

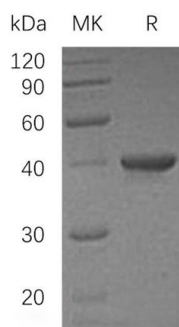
Description

Species	Human
Source	E.coli-derived Human UBE2I/UBC9 protein Met 1-Ser158, with an N-terminal GST
Mol_Mass	44.4 kDa
Accession	P63279
Bio-activity	Not validated for activity

Properties

Purity	> 95 % as determined by reducing SDS-PAGE.
Endotoxin	< 1.0 EU per µg of the protein as determined by the LAL method.
Storage	Store at < -20°C, stable for 6 months. Please minimize freeze-thaw cycles.
Shipping	This product is provided as liquid. It is shipped at frozen temperature with blue ice/gel packs. Upon receipt, store it immediately at < -20°C.
Formulation	Supplied as a 0.2 µm filtered solution of 50mM HEPES, 150mM NaCl, pH 7.5.
Reconstitution	Not Applicable

Data



> 95 % as determined by reducing SDS-PAGE.

Background

SUMO-Conjugating Enzyme UBC9 (UBC9) belongs to the ubiquitin-conjugating enzyme family. UBC9 is homologous to ubiquitin-conjugating enzymes (E2s). However, instead of conjugating ubiquitin, UBC9 conjugates a ubiquitin homologue; Small Ubiquitin-Like Modifier 1 (SUMO-1). The conjugation of ubiquitin requires the activities of ubiquitin-activating (E1) and conjugating (E2) enzymes. It is suggested that UBC9 might play a role in DNA repair and perhaps even in aging.