

KCNQ5 Polyclonal Antibody

Catalog Number: E-AB-15155



Note: Centrifuge before opening to ensure complete recovery of vial contents.

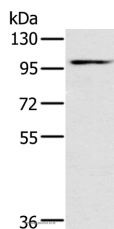
Description

Reactivity	Human, Mouse
Immunogen	Recombinant protein of human KCNQ5
Host	Rabbit
Isotype	IgG
Purification	Affinity purification
Conjugation	Unconjugated
Formulation	PBS with 0.05% sodium azide and 50% glycerol, PH7.4

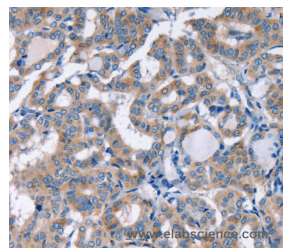
Applications Recommended Dilution

WB	1:200-1:1000
IHC	1:25-1:100

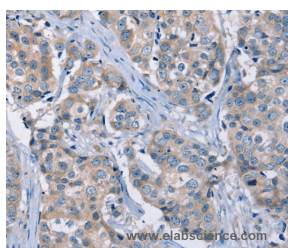
Data



Western Blot analysis of Mouse heart tissue using KCNQ5 Polyclonal Antibody at dilution of 1:500
Calculated Mw: 102kDa



Immunohistochemistry of paraffin-embedded Human thyroid cancer using KCNQ5 Polyclonal Antibody at dilution of 1:30



Immunohistochemistry of paraffin-embedded Human breast cancer using KCNQ5 Polyclonal Antibody at dilution of 1:30

Preparation & Storage

Storage Store at -20°C. Avoid freeze / thaw cycles.

Background

This gene is a member of the KCNQ potassium channel gene family that is differentially expressed in subregions of the brain and in skeletal muscle. The protein encoded by this gene yields currents that activate slowly with depolarization and can form heteromeric channels with the protein encoded by the KCNQ3 gene. Currents expressed from this protein have voltage dependences and inhibitor sensitivities in common with Human, Mouse-currents. They are also inhibited by M1

For Research Use Only

A Reliable Research Partner in Life Science and Medicine

Toll-free: 1-888-852-8623

Web: www.elabscience.com

Tel: 1-832-243-6086

Email: techsupport@elabscience.com

Fax: 1-832-243-6017

KCNQ5 Polyclonal Antibody

Catalog Number: E-AB-15155



muscarinic receptor activation. Multiple transcript variants encoding different isoforms have been found for this gene.

For Research Use Only

A Reliable Research Partner in Life Science and Medicine

Toll-free: 1-888-852-8623

Tel: 1-832-243-6086

Fax: 1-832-243-6017

Web: www.elabscience.com

Email: techsupport@elabscience.com