

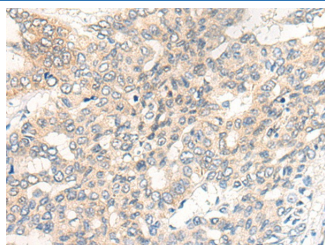
CHRD Polyclonal Antibody

catalog number: E-AB-18617

Note: Centrifuge before opening to ensure complete recovery of vial contents.

Description	
Reactivity	Human;Mouse;Rat
Immunogen	Fusion protein of human CHRD
Host	Rabbit
Isotype	IgG
Purification	Antigen affinity purification
Conjugation	Unconjugated
Buffer	Phosphate buffered solution, pH 7.4, containing 0.05% stabilizer and 50% glycerol.
Applications	Recommended Dilution
IHC	1:30-1:150

Data



Immunohistochemistry of paraffin-embedded Human liver cancer tissue using CHRD Polyclonal Antibody at dilution of 1:40(×200)

Preparation & Storage	
Storage	Store at -20°C Valid for 12 months. Avoid freeze / thaw cycles.
Shipping	The product is shipped with ice pack, upon receipt, store it immediately at the temperature recommended.

Background

CHRD (Chordin) is a Protein Coding gene. Diseases associated with CHRD include Cornelia De Lange Syndrome. Among its related pathways are Mesodermal Commitment Pathway and TGF-beta signaling pathway (KEGG). GO annotations related to this gene include heparin binding and syndecan binding. An important paralog of this gene is CHRD12. This gene encodes a secreted protein that dorsalizes early vertebrate embryonic tissues by binding to ventralizing TGF-beta-like bone morphogenetic proteins and sequestering them in latent complexes. The encoded protein may also have roles in organogenesis and during adulthood. It has been suggested that this gene could be a candidate gene for Cornelia de Lange syndrome. Reduced expression of this gene results in enhanced bone regeneration. Alternative splicing results in multiple transcript variants. Other alternative splice variants have been described but their full length sequence has not been determined.

For Research Use Only