

KHDRBS2 Polyclonal Antibody

catalog number: **E-AB-63223**

Note: Centrifuge before opening to ensure complete recovery of vial contents.

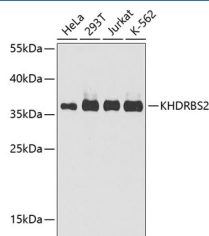
Description

Reactivity	Human;Mouse
Immunogen	A synthetic peptide of human KHDRBS2 (NP_689901.2).
Host	Rabbit
Isotype	IgG
Purification	Affinity purification
Buffer	Phosphate buffered solution, pH 7.4, containing 0.05% stabilizer and 50% glycerol.

Applications

Applications	Recommended Dilution
WB	1:500-1:1000
IHC	1:100-1:200

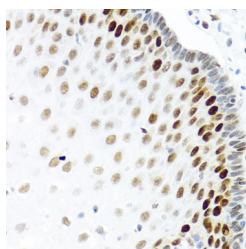
Data



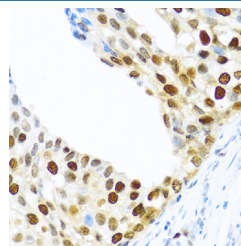
Western blot analysis of extracts of various cell lines using KHDRBS2 Polyclonal Antibody at dilution of 1:1000.

Observed-MW:39 kDa

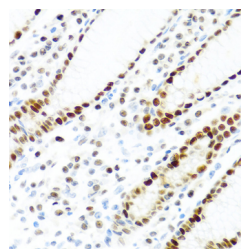
Calculated-MW:38 kDa



Immunohistochemistry of paraffin-embedded Human esophagus using KHDRBS2 Polyclonal Antibody at dilution of 1:100 (40x lens).



Immunohistochemistry of paraffin-embedded Human prostate cancer using KHDRBS2 Polyclonal Antibody at dilution of 1:100 (40x lens).



Immunohistochemistry of paraffin-embedded Human stomach using KHDRBS2 Polyclonal Antibody at dilution of 1:100 (40x lens).

Preparation & Storage

Storage	Store at -20°C Valid for 12 months. Avoid freeze / thaw cycles.
Shipping	The product is shipped with ice pack, upon receipt, store it immediately at the temperature recommended.

Background

For Research Use Only

KHDRBS2 (KH RNA Binding Domain Containing, Signal Transduction Associated 2) is a Protein Coding gene. Diseases associated with KHDRBS2 include Atrial Septal Defect 2. Among its related pathways are Signaling by GPCR and Signaling by PTK6. Gene Ontology (GO) annotations related to this gene include nucleic acid binding and protein heterodimerization activity. An important paralog of this gene is KHDRBS3.