

GZMM Polyclonal Antibody

catalog number: E-AB-53442

Note: Centrifuge before opening to ensure complete recovery of vial contents.

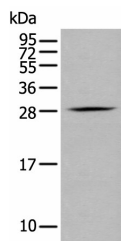
Description

Reactivity	Human;Mouse;Rat
Immunogen	Synthetic peptide of human GZMM
Host	Rabbit
Isotype	IgG
Purification	Antigen affinity purification
Buffer	Phosphate buffered solution, pH 7.4, containing 0.05% stabilizer and 50% glycerol.

Applications

Applications	Recommended Dilution
WB	1:500-1:2000
IHC	1:20-1:100

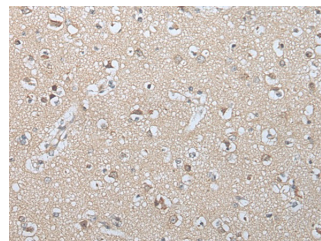
Data



Western blot analysis of RAW264.7 cell using GZMM Polyclonal Antibody at dilution of 1:400

Observed-MW:Refer to figures

Calculated-MW:28 kDa



Immunohistochemistry of paraffin-embedded Human brain tissue using GZMM Polyclonal Antibody at dilution of 1:25(×200)

Preparation & Storage

Storage	Store at -20°C Valid for 12 months. Avoid freeze / thaw cycles.
Shipping	The product is shipped with ice pack,upon receipt,store it immediately at the temperature recommended.

Background

GZMM (Granzyme M) is a Protein Coding gene. Diseases associated with GZMM include Adrenal Insufficiency, Congenital, With 46Xy Sex Reversal, Partial Or Complete and Congenital Adrenal Insufficiency. Among its related pathways are Innate Immune System and Granzyme Pathway. GO annotations related to this gene include serine-type endopeptidase activity and endopeptidase activity. An important paralog of this gene is CFD. Human natural killer (NK) cells and activated lymphocytes express and store a distinct subset of neutral serine proteases together with proteoglycans and other immune effector molecules in large cytoplasmic granules. These serine proteases are collectively termed granzymes and include 4 distinct gene products: granzyme A, granzyme B, granzyme H, and the protein encoded by this gene, granzyme M. Two transcript variants encoding different isoforms have been found for this gene.

For Research Use Only