

## CRACR2A Polyclonal Antibody

**catalog number: E-AB-64839**

**Note:** Centrifuge before opening to ensure complete recovery of vial contents.

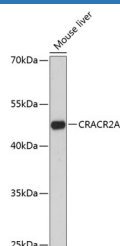
### Description

<b>Reactivity</b>	Human;Mouse
<b>Immunogen</b>	Recombinant fusion protein of human CRACR2A (NP_001138430.1).
<b>Host</b>	Rabbit
<b>Isotype</b>	IgG
<b>Purification</b>	Affinity purification
<b>Buffer</b>	Phosphate buffered solution, pH 7.4, containing 0.05% stabilizer and 50% glycerol.

### Applications

<b>WB</b>	1:500-1:2000
<b>IHC</b>	1:50-1:200

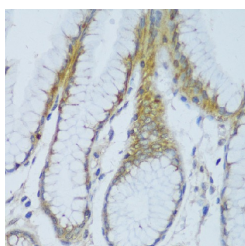
### Data



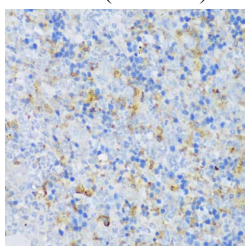
Western blot analysis of extracts of Mouse liver using CRACR2A Polyclonal Antibody at dilution of 1:3000.

**Observed-MW:45 kDa**

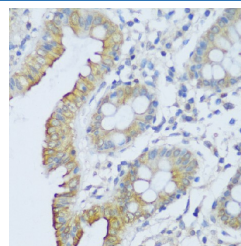
**Calculated-MW:45 kDa/83 kDa**



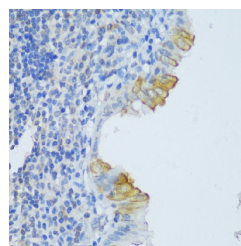
Immunohistochemistry of paraffin-embedded Human stomach using CRACR2A Polyclonal Antibody at dilution of 1:150 (40x lens).



Immunohistochemistry of paraffin-embedded Mouse spleen using CRACR2A Polyclonal Antibody at dilution of 1:150 (40x lens).



Immunohistochemistry of paraffin-embedded Human colon using CRACR2A Polyclonal Antibody at dilution of 1:150 (40x lens).



Immunohistochemistry of paraffin-embedded Human appendix using CRACR2A Polyclonal Antibody at dilution of 1:150 (40x lens).

### For Research Use Only

## Preparation & Storage

**Storage**

Store at -20°C Valid for 12 months. Avoid freeze / thaw cycles.

**Shipping**

The product is shipped with ice pack, upon receipt, store it immediately at the temperature recommended.

## Background

Ca<sup>2+</sup>-binding protein that plays a key role in store-operated Ca<sup>2+</sup> entry (SOCE) in T-cells by regulating CRAC channel activation. Acts as a cytoplasmic calcium-sensor that facilitates the clustering of ORAI1 and STIM1 at the junctional regions between the plasma membrane and the endoplasmic reticulum upon low Ca<sup>2+</sup> concentration. It thereby regulates CRAC channel activation, including translocation and clustering of ORAI1 and STIM1. Upon increase of cytoplasmic Ca<sup>2+</sup> resulting from opening of CRAC channels, dissociates from ORAI1 and STIM1, thereby destabilizing the ORAI1-STIM1 complex.

## For Research Use Only