

PRDM2 Polyclonal Antibody

catalog number: E-AB-65588

Note: *Centrifuge before opening to ensure complete recovery of vial contents.*

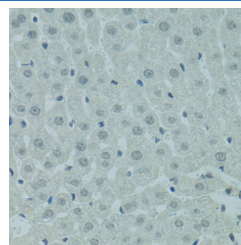
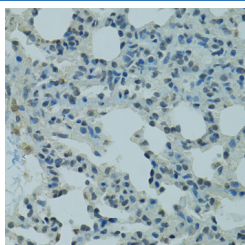
Description

Reactivity	Rat
Immunogen	Recombinant fusion protein of human PRDM2 (NP_036363.2).
Host	Rabbit
Isotype	IgG
Purification	Affinity purification
Buffer	Phosphate buffered solution, pH 7.4, containing 0.05% stabilizer and 50% glycerol.

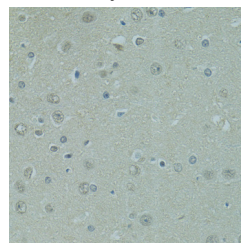
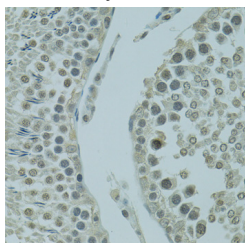
Applications Recommended Dilution

IHC	1:50-1:200
------------	------------

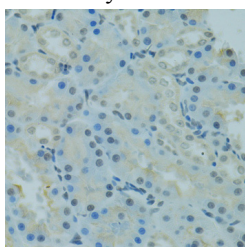
Data



Immunohistochemistry of paraffin-embedded Rat lung using PRDM2 Polyclonal Antibody at dilution of 1:100 (40x lens). Immunohistochemistry of paraffin-embedded Rat liver using PRDM2 Polyclonal Antibody at dilution of 1:100 (40x lens).



Immunohistochemistry of paraffin-embedded Rat testis using PRDM2 Polyclonal Antibody at dilution of 1:100 (40x lens). Immunohistochemistry of paraffin-embedded Rat brain using PRDM2 Polyclonal Antibody at dilution of 1:100 (40x lens).



Immunohistochemistry of paraffin-embedded Rat kidney using PRDM2 Polyclonal Antibody at dilution of 1:100 (40x lens).

Preparation & Storage

Storage	Store at -20°C Valid for 12 months. Avoid freeze / thaw cycles.
Shipping	The product is shipped with ice pack, upon receipt, store it immediately at the temperature recommended.

For Research Use Only

Background

This tumor suppressor gene is a member of a nuclear histone/protein methyltransferase superfamily. It encodes a zinc finger protein that can bind to retinoblastoma protein, estrogen receptor, and the TPA-responsive element (MTE) of the heme-oxygenase-1 gene. Although the functions of this protein have not been fully characterized, it may (1) play a role in transcriptional regulation during neuronal differentiation and pathogenesis of retinoblastoma, (2) act as a transcriptional activator of the heme-oxygenase-1 gene, and (3) be a specific effector of estrogen action. Multiple transcript variants encoding different isoforms have been found for this gene.

For Research Use Only