

PPM1K Polyclonal Antibody

catalog number: E-AB-53177

Note: Centrifuge before opening to ensure complete recovery of vial contents.

Description

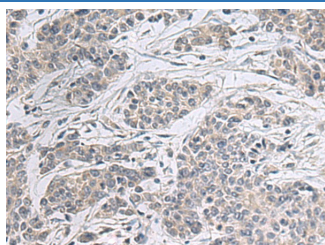
Reactivity	Human;Mouse
Immunogen	Fusion protein of human PPM1K
Host	Rabbit
Isotype	IgG
Purification	Antigen affinity purification
Conjugation	Unconjugated
buffer	Phosphate buffered solution, pH 7.4, containing 0.05% stabilizer and 50% glycerol.

Applications

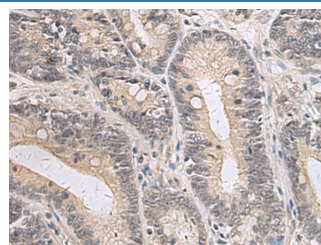
Recommended Dilution

IHC	1:50-1:100
------------	------------

Data



Immunohistochemistry of paraffin-embedded Human colorectal cancer tissue using PPM1K Polyclonal Antibody at dilution of 1:55(×200)



Immunohistochemistry of paraffin-embedded Human gastric cancer tissue using PPM1K Polyclonal Antibody at dilution of 1:55(×200)

Preparation & Storage

Storage	Store at -20°C Valid for 12 months. Avoid freeze / thaw cycles.
Shipping	The product is shipped with ice pack, upon receipt, store it immediately at the temperature recommended.

Background

This gene encodes a member of the PPM family of Mn²⁺/Mg²⁺-dependent protein phosphatases. The encoded protein, essential for cell survival and development, is targeted to the mitochondria where it plays a key role in regulation of the mitochondrial permeability transition pore. PPM1K (Protein Phosphatase, Mg²⁺/Mn²⁺ Dependent 1K) is a Protein Coding gene. Diseases associated with PPM1K include Maple Syrup Urine Disease, Mild Variant and Intermediate Maple Syrup Urine Disease. Among its related pathways are Valine, leucine and isoleucine degradation and Viral mRNA Translation. GO annotations related to this gene include protein serine/threonine phosphatase activity. An important paralog of this gene is PPM1E.

For Research Use Only