

## PLLP Polyclonal Antibody

catalog number: E-AB-66601

**Note:** Centrifuge before opening to ensure complete recovery of vial contents.

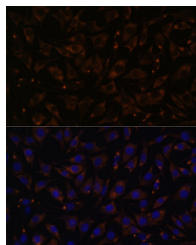
### Description

Reactivity	Mouse;Rat
Immunogen	A synthetic peptide of human PLLP (NP_057077.1).
Host	Rabbit
Isotype	IgG
Purification	Affinity purification
Buffer	Phosphate buffered solution, pH 7.4, containing 0.05% stabilizer and 50% glycerol.

Applications	Recommended Dilution
--------------	----------------------

IF	1:50-1:200
----	------------

### Data



Immunofluorescence analysis of L929 cells using PLLP Polyclonal Antibody at dilution of 1:100. Blue: DAPI for nuclear staining.

### Preparation & Storage

Storage	Store at -20°C Valid for 12 months. Avoid freeze / thaw cycles.
Shipping	The product is shipped with ice pack, upon receipt, store it immediately at the temperature recommended.

### Background

PLLP (Plasmolipin) is a Protein Coding gene. Diseases associated with PLLP include Prostate Lymphoma and Bardet-Biedl Syndrome. An important paralog of this gene is CMTM8.

### For Research Use Only