

# Recombinant Human Alpha-Fetoprotein/AFP protein (His tag)



Catalog Number:PDMH100106

**Note:** Centrifuge before opening to ensure complete recovery of vial contents.

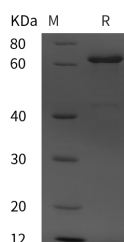
## Description

<b>Synonyms</b>	Alpha-fetoprotein;Alpha-1-fetoprotein;Alpha-fetoglobulin;AFP;HPAFP;FETA
<b>Species</b>	Human
<b>Expression Host</b>	HEK293 Cells
<b>Sequence</b>	Met1-Val609
<b>Accession</b>	P02771
<b>Calculated Molecular Weight</b>	66.9 kDa
<b>Observed molecular weight</b>	68 kDa
<b>Tag</b>	C-His

## Properties

<b>Purity</b>	> 95 % as determined by reducing SDS-PAGE.
<b>Endotoxin</b>	Please contact us for more information.
<b>Storage</b>	Generally, lyophilized proteins are stable for up to 12 months when stored at -20 to -80°C. Reconstituted protein solution can be stored at 4-8°C for 2-7 days. Aliquots of reconstituted samples are stable at < -20°C for 3 months.
<b>Shipping</b>	This product is provided as lyophilized powder which is shipped with ice packs.
<b>Formulation</b>	Lyophilized from sterile PBS, pH 7.4. Normally 5 % - 8 % trehalose, mannitol and 0.01 % Tween80 are added as protectants before lyophilization. Please refer to the specific buffer information in the printed manual.
<b>Reconstitution</b>	Please refer to the printed manual for detailed information.

## Data



> 95 % as determined by reducing SDS-PAGE.

## Background

Alpha-fetoprotein (AFP) is classified as a member of the albuminoid gene superfamily consisting of albumin; AFP; vitaminD (Gc) protein; and alpha-albumin. AFP is a glycoprotein of 591 amino acids and a carbohydrate moiety. AFP is a major plasma protein produced by the yolk sac and the liver during fetal development. It is thought to be the fetal form of serum albumin. AFP binds to copper; nickel; fatty acids and bilirubin and is found in monomeric; dimeric and trimeric forms. AFP is one of the several embryo-specific proteins and is a dominant serum protein as early in human embryonic life as one month; when albumin and transferrin are present in relatively small amounts. It is first synthesized in the human by the yolk sac and liver (1-2 months) and subsequently predominantly in the liver. A small amount of AFP is produced by the GI tract of the human conceptus. It has been proved that AFP may reappear in the serum in elevated

## For Research Use Only

A Reliable Research Partner in Life Science and Medicine

Toll-free: 1-888-852-8623

Web: [www.elabscience.com](http://www.elabscience.com)

Tel: 1-832-243-6086

Email: [techsupport@elabscience.com](mailto:techsupport@elabscience.com)

Fax: 1-832-243-6017

# Recombinant Human Alpha-Fetoprotein/AFP protein (His tag)



Catalog Number: PDMH100106

---

amounts in adult life in association with normal restorative processes and with malignant growth. Alpha-fetoprotein (AFP) is a specific marker for hepatocellular carcinoma (HCC); teratoblastomas; and neural tube defect (NTD).

---

## For Research Use Only

A Reliable Research Partner in Life Science and Medicine

Toll-free: 1-888-852-8623

Tel: 1-832-243-6086

Fax: 1-832-243-6017

Web: [www.elabscience.com](http://www.elabscience.com)

Email: [techsupport@elabscience.com](mailto:techsupport@elabscience.com)