

Recombinant Human DPP3 Protein (His Tag)

Catalog Number: PKSH032357

Note: Centrifuge before opening to ensure complete recovery of vial contents.

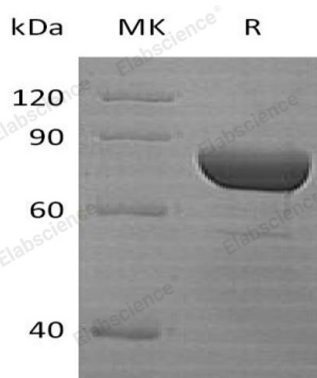
Description

Species	Human
Source	E.coli-derived Human DPP3 protein Met 1-Ala737, with an N-terminal His
Calculated MW	84.8 kDa
Observed MW	70-90 kDa
Accession	Q9NY33
Bio-activity	Not validated for activity

Properties

Purity	> 95 % as determined by reducing SDS-PAGE.
Concentration	Subject to label value.
Endotoxin	< 1.0 EU per µg of the protein as determined by the LAL method.
Storage	Store at < -20°C, stable for 6 months. Please minimize freeze-thaw cycles.
Shipping	This product is provided as liquid. It is shipped at frozen temperature with blue ice/gel packs. Upon receipt, store it immediately at < -20°C.
Formulation	Supplied as a 0.2 µm filtered solution of 25mM Tris-HCl, 10mM NaCl, 2mM DTT, 0.05% Tween 80, 20% Glycerol, pH 8.0.

Data



> 95 % as determined by reducing SDS-PAGE.

Background

Dipeptidyl peptidase 3 (DPP3), is a member of the S9B family in clan SC of the serine proteases. DPP3 has post-proline dipeptidyl aminopeptidase activity, cleaving Xaa-Pro dipeptides from the N-termini of proteins. This cytoplasmic protein binds a single zinc ion with its zinc-binding motif (HELLGH). It releases an N-terminal dipeptide from a peptide comprising four or more residues, with broad specificity and also acts on dipeptidyl 2-naphthylamides. Increased activity of this protein has a relationship with endometrial and ovarian cancers.

For Research Use Only

Toll-free: 1-888-852-8623
Web: www.elabscience.com

Tel: 1-832-243-6086
Email: techsupport@elabscience.com

Fax: 1-832-243-6017