

Recombinant Human IL-20RB Protein (Fc Tag)

Catalog Number: PKSH032574

Note: Centrifuge before opening to ensure complete recovery of vial contents.

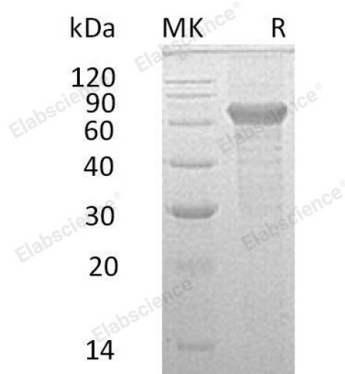
Description

Species	Human
Source	HEK293 Cells-derived Human IL-20RB protein Asp30-Ala230, with an C-terminal Fc
Calculated MW	49.6 kDa
Observed MW	60-85 kDa
Accession	Q6UXL0
Bio-activity	Not validated for activity

Properties

Purity	> 90 % as determined by reducing SDS-PAGE.
Concentration	Subject to label value.
Endotoxin	< 1.0 EU per µg of the protein as determined by the LAL method.
Storage	Store at < -20°C, stable for 6 months. Please minimize freeze-thaw cycles.
Shipping	This product is provided as liquid. It is shipped at frozen temperature with blue ice/gel packs. Upon receipt, store it immediately at < - 20°C.
Formulation	Supplied as a 0.2 µm filtered solution of 20mM PB, 150mM NaCl, pH 7.4.

Data



> 90 % as determined by reducing SDS-PAGE.

Background

Interleukin-20 receptor subunit beta (IL20RB) is a single-pass type I membrane protein and belongs to the type II cytokine receptor family. It contains 2 fibronectin type-III domains. There are two kinds of type II cytokine receptors : cytokine receptors that bind type I and type II interferons; cytokine receptors that bind members of the interleukin-10 family (interleukin-10, interleukin-20 and interleukin-22). Type II cytokine receptors are similar to type I cytokine receptors except they do not possess the signature sequence WSXWS that is characteristic of type I receptors. They are expressed on the surface of certain cells, which bind and respond to a select group of cytokines. These receptors are related predominantly by sequence similarities in their extracellular portions that are composed of tandem Ig-like domains. The intracellular domain of type II cytokine receptors is typically associated with a tyrosine kinase belonging to the Janus kinase (JAK) family

For Research Use Only

Toll-free: 1-888-852-8623
Web: www.elabscience.com

Tel: 1-832-243-6086
Email: techsupport@elabscience.com

Fax: 1-832-243-6017