

CALB2 Polyclonal Antibody

catalog number: E-AB-62649

Note: Centrifuge before opening to ensure complete recovery of vial contents.

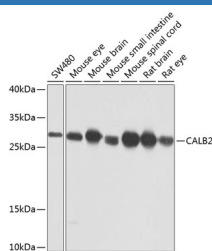
Description

Reactivity	Human;Mouse;Rat
Immunogen	Recombinant fusion protein of human CALB2 (NP_001731.2).
Host	Rabbit
Isotype	IgG
Purification	Affinity purification
Buffer	Phosphate buffered solution, pH 7.4, containing 0.05% stabilizer and 50% glycerol.

Applications

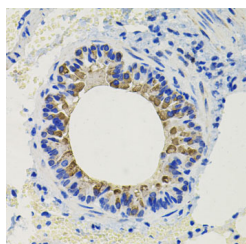
Applications	Recommended Dilution
WB	1:1000-1:4000
IHC	1:50-1:100
IF	1:50-1:200

Data

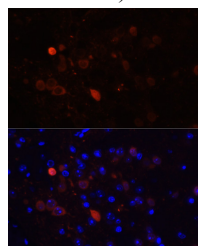


Western blot analysis of extracts of various cell lines using CALB2 Polyclonal Antibody at dilution of 1:1000.

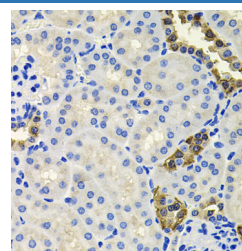
Observed-MV:29 kDa
Calculated-MV:31 kDa



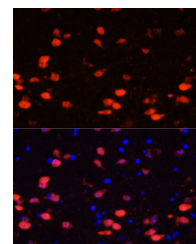
Immunohistochemistry of paraffin-embedded Mouse lung using CALB2 Polyclonal Antibody at dilution of 1:100 (40x lens).



Immunofluorescence analysis of Mouse brain using CALB2 Polyclonal Antibody at dilution of 1:100. Blue: DAPI for nuclear staining.



Immunohistochemistry of paraffin-embedded Mouse kidney using CALB2 Polyclonal Antibody at dilution of 1:100 (40x lens).



Immunofluorescence analysis of Rat brain using CALB2 Polyclonal Antibody at dilution of 1:100. Blue: DAPI for nuclear staining.

For Research Use Only

Preparation & Storage

Storage

Store at -20°C Valid for 12 months. Avoid freeze / thaw cycles.

Shipping

The product is shipped with ice pack, upon receipt, store it immediately at the temperature recommended.

Background

This gene encodes an intracellular calcium-binding protein belonging to the troponin C superfamily. Members of this protein family have six EF-hand domains which bind calcium. This protein plays a role in diverse cellular functions, including message targeting and intracellular calcium buffering. It also functions as a modulator of neuronal excitability, and is a diagnostic marker for some human diseases, including Hirschsprung disease and some cancers. Alternative splicing results in multiple transcript variants.

For Research Use Only