

FITC Anti-Rat CD3 Antibody[1F4]

Catalog Number: AN00670C

Note: Centrifuge before opening to ensure complete recovery of vial contents.

Description

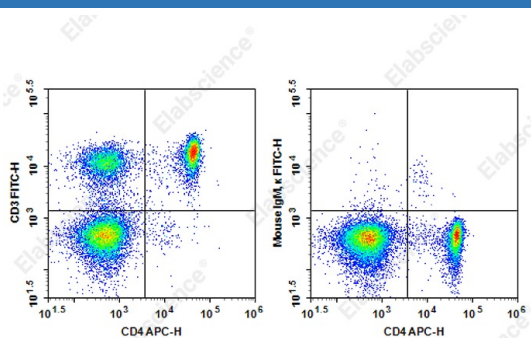
Reactivity	Rat
Host	Mouse
Isotype	Mouse IgM, κ
Clone No.	1F4
Isotype Control	FITC Mouse IgM, κ Isotype Control[MM-30] [Product E-AB-F09782C]
Conjugation	FITC
Conjugation Information	FITC is designed to be excited by the Blue laser (488 nm) and detected using an optical filter centered near 530 nm (e.g., a 525/40 nm bandpass filter).
Storage Buffer	Phosphate buffered solution, pH 7.2, containing 0.09% stabilizer.

Applications

Recommended usage

FCM	Each lot of this antibody is quality control tested by flow cytometric analysis. The amount of the reagent is suggested to be used 5 μL of antibody per test (million cells in 100 μL staining volume or per 100 μL of whole blood). Please check your vial before the experiment. Since applications vary, the appropriate dilutions must be determined for individual use.
-----	---

Data



Staining of Rat splenocytes cells with APC Anti-Human CD4 Antibody and FITC Anti-Rat CD3 Antibody[1F4] (left) or FITC Mouse IgM, κ Isotype Control (right). Total viable cells were used for analysis.

Preparation & Storage

Storage	Keep as concentrated solution. This product can be stored at 2-8°C for 24 months. Please protected from prolonged exposure to light and do not freeze.
Shipping	Ice bag

Antigen Information

Alternate Names	T cell antigen receptor complex;T3
Uniprot ID	P19377
Gene ID	25710;300678;315609;25300

For Research Use Only

Background

CD3 is a complex composed of δ , γ , ϵ , and ζ chains. They are 20-25 kD members of the immunoglobulin superfamily and associated with the T cell receptor (TCR). CD3 is expressed on thymocytes, peripheral T cells, some NK-T cells, and dendritic epidermal T cells. CD3 is involved in antigen recognition, signal transduction, and T cell activation