

Recombinant DYNLL1 Monoclonal Antibody

catalog number: **AN301509L**

Note: Centrifuge before opening to ensure complete recovery of vial contents.

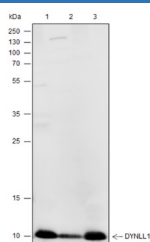
Description

Reactivity	Human;Rat;Mouse
Immunogen	Recombinant human DYNLL1 fragment
Host	Rabbit
Isotype	IgG, κ
Clone	A208
Purification	Protein A purified
Buffer	PBS, 50% glycerol, 0.05% Proclin 300, 0.05% protein protectant.

Applications

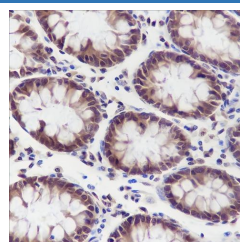
Applications	Recommended Dilution
WB	1:5000
IHC	1:100

Data



Western Blot with DYNLL1 Monoclonal Antibody at dilution of 1:5000. Lane 1: HeLa, Lane 2: Neuro-2a, Lane 3: Rat kidney

Observed-MW:10 kDa
Calculated-MW:10 kDa



Immunohistochemistry of paraffin-embedded Human colon using DYNLL1 Monoclonal Antibody at dilution of 1:100.

Preparation & Storage

Storage	Store at -20°C Valid for 12 months. Avoid freeze / thaw cycles.
Shipping	Ice bag

Background

Acts as one of several non-catalytic accessory components of the cytoplasmic dynein 1 complex that are thought to be involved in linking dynein to cargos and to adapter proteins that regulate dynein function. Cytoplasmic dynein 1 acts as a motor for the intracellular retrograde motility of vesicles and organelles along microtubules. May play a role in changing or maintaining the spatial distribution of cytoskeletal structures. Binds and inhibits the catalytic activity of neuronal nitric oxide synthase. Promotes transactivation functions of ESR1 and plays a role in the nuclear localization of ESR1. Regulates apoptotic activities of BCL2L1 by sequestering it to microtubules. Upon apoptotic stimuli the BCL2L1-DYNLL1 complex dissociates from cytoplasmic dynein and translocates to mitochondria and sequesters BCL2 thus neutralizing its antiapoptotic activity.

For Research Use Only

Toll-free: 1-888-852-8623
Web: www.elabscience.com

Tel: 1-832-243-6086
Email: techsupport@elabscience.com

Fax: 1-832-243-6017

Rev. V1.0