

# EpCAM/TROP-1 Polyclonal Antibody(Capture/Detector)

catalog number: AN004600P



**Note:** Centrifuge before opening to ensure complete recovery of vial contents.

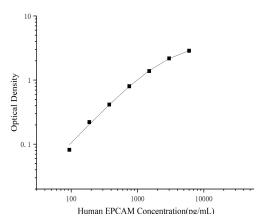
## Description

<b>Reactivity</b>	Human;Mouse
<b>Immunogen</b>	Recombinant Human EpCAM/TROP-1 Protein expressed by Mammalian
<b>Host</b>	Rabbit
<b>Isotype</b>	Rabbit IgG
<b>Purification</b>	Antigen Affinity Purification
<b>Conjugation</b>	Unconjugated
<b>buffer</b>	Phosphate buffered solution, pH 7.2, containing 0.05% proclin 300.

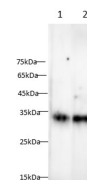
## Applications

<b>ELISA Capture</b>	2-8 µg/mL
<b>ELISA Detector</b>	0.1-0.4 µg/mL
<b>WB</b>	1:500-1:1000

## Data



Sandwich ELISA-Recombinant Human EpCAM/TROP-1 Protein standard curve. Background subtracted standard curve using Anti-EpCAM/TROP-1 antibody(AN004600P) (Capture), Anti-EpCAM/TROP-1 antibody(AN004600P) (Detector). The reference range value is 93.8 - 6,000 pg/mL for human.



Western blot with Anti EpCAM/TROP-1 Polyclonal antibody at dilution of 1:1000. Lane 1: A431 cell lysate, Lane 2: Mouse small intestine tissue lysate.

## Preparation & Storage

<b>Storage</b>	Store at 4°C valid for 12 months or -20°C valid for long term storage, avoid freeze / thaw cycles.
<b>Shipping</b>	The product is shipped with ice pack, upon receipt, store it immediately at the temperature recommended.

## Background

This gene encodes a carcinoma-associated antigen and is a member of a family that includes at least two type I membrane proteins. This antigen is expressed on most normal epithelial cells and gastrointestinal carcinomas and functions as a homotypic calcium-independent cell adhesion molecule. The antigen is being used as a target for immunotherapy treatment of human carcinomas. Mutations in this gene result in congenital tufting enteropathy.

## For Research Use Only