

## AGR2 Polyclonal Antibody

catalog number: E-AB-10036

**Note:** Centrifuge before opening to ensure complete recovery of vial contents.

### Description

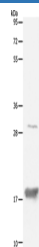
<b>Reactivity</b>	Human;Mouse
<b>Immunogen</b>	Recombinant protein of human AGR2
<b>Host</b>	Rabbit
<b>Isotype</b>	IgG
<b>Purification</b>	Affinity purification
<b>Conjugation</b>	Unconjugated
<b>Buffer</b>	Phosphate buffered solution, pH 7.4, containing 0.05% stabilizer and 50% glycerol.

### Applications

### Recommended Dilution

<b>WB</b>	1:1000-1:5000
-----------	---------------

### Data



Western Blot analysis of Mouse Large intestine tissue using  
AGR2 Polyclonal Antibody at dilution of 1:1000

**Calculated-MW:20 kDa**

### Preparation & Storage

<b>Storage</b>	Store at -20°C Valid for 12 months. Avoid freeze / thaw cycles.
<b>Shipping</b>	The product is shipped with ice pack, upon receipt, store it immediately at the temperature recommended.

### Background

Anterior gradient protein 2 homolog (AGR2) is a human protein originally discovered in *Xenopus laevis*, encoded for by the gene of the same name. In *Xenopus* AGR2 is an important role in cement gland differentiation, however in human cancer cell lines high levels of AGR2 correlate with reduction of the p53 response and AGR2 levels are elevated in the preneoplastic tissue Barrett's oesophagus.