

## Recombinant Mouse CCL6/C10 Protein(Trx Tag)

**Catalog Number: PDEM100152**

**Note:** Centrifuge before opening to ensure complete recovery of vial contents.

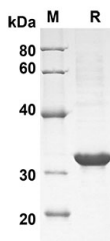
### Description

<b>Species</b>	Mouse
<b>Source</b>	E.coli-derived Mouse CCL6/C10 protein Gly22-Ala116, with an N-terminal Trx
<b>Calculated MW</b>	30.3 kDa
<b>Observed MW</b>	32 kDa
<b>Accession</b>	P27784
<b>Bio-activity</b>	Not validated for activity

### Properties

<b>Purity</b>	> 90% as determined by reducing SDS-PAGE.
<b>Endotoxin</b>	< 10 EU/mg of the protein as determined by the LAL method
<b>Storage</b>	Generally, lyophilized proteins are stable for up to 12 months when stored at -20 to -80 °C. Reconstituted protein solution can be stored at 4-8°C for 2-7 days. Aliquots of reconstituted samples are stable at < -20°C for 3 months.
<b>Shipping</b>	This product is provided as lyophilized powder which is shipped with ice packs.
<b>Formulation</b>	Lyophilized from a 0.2 µm filtered solution in PBS with 5% Trehalose and 5% Mannitol.
<b>Reconstitution</b>	It is recommended that sterile water be added to the vial to prepare a stock solution of 0.5 mg/mL. Concentration is measured by UV-Vis.

### Data



SDS-PAGE analysis of Mouse CCL6/C10 proteins , 2µg/lane  
of Recombinant Mouse CCL6/C10 proteins was resolved  
with SDS-PAGE under reducing conditions , showing bands  
at 32 KD

### Background

In mice , CCL6/C10 is expressed in cells from neutrophil and macrophage lineages , and can be greatly induced under conditions suitable for myeloid cell differentiation. It is highly expressed in bone marrow cultures that have been stimulated with the cytokine GM-CSF. Some low levels of gene expression also occur in certain cell lines of myeloid origin (e.g. the immature myeloid cell lines DA3 and 32D cl3 , and the macrophage cell line P388D) that can also be greatly induced in culture with GM-CSF. However , in activated T cell lines , expression of CCL6/C10 is greatly reduced. CCL6/C10 can also be induced in the Mouse lung by the cytokine interleukin 13

### For Research Use Only