

# SNCG Polyclonal Antibody

catalog number: E-AB-10081

**Note:** Centrifuge before opening to ensure complete recovery of vial contents.

## Description

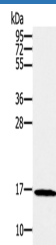
<b>Reactivity</b>	Human
<b>Immunogen</b>	Recombinant protein of human SNCG
<b>Host</b>	Rabbit
<b>Isotype</b>	IgG
<b>Purification</b>	Affinity purification
<b>Conjugation</b>	Unconjugated
<b>buffer</b>	Phosphate buffered solution, pH 7.4, containing 0.05% stabilizer and 50% glycerol.

## Applications

## Recommended Dilution

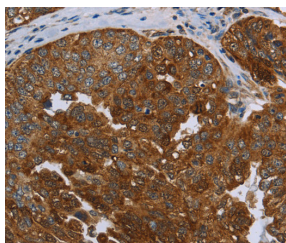
<b>WB</b>	1:500-1:2000
<b>IHC</b>	1:100-1:300

## Data

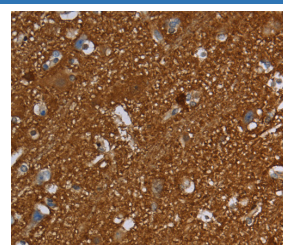


Western Blot analysis of HT-29 cell using SNCG Polyclonal Antibody at dilution of 1:800

Calculated-MV:13 kDa



Immunohistochemistry of paraffin-embedded Human ovarian cancer using SNCG Polyclonal Antibody at dilution of 1:60



Immunohistochemistry of paraffin-embedded Human brain using SNCG Polyclonal Antibody at dilution of 1:60

## Preparation & Storage

<b>Storage</b>	Store at -20°C Valid for 12 months. Avoid freeze / thaw cycles.
<b>Shipping</b>	The product is shipped with ice pack, upon receipt, store it immediately at the temperature recommended.

## Background

This gene encodes a member of the synuclein family of proteins which are believed to be involved in the pathogenesis of neurodegenerative diseases. Mutations in this gene have also been associated with breast tumor development.

## For Research Use Only