

Recombinant Human Ribonuclease 3/RNASE3 Protein (His Tag)

DIA • AN[®]
by Elabscience

Catalog Number: PKSH033002

Note: Centrifuge before opening to ensure complete recovery of vial contents.

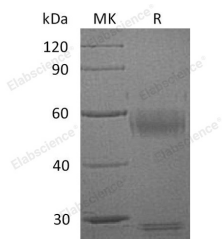
Description

| | |
|------------------------------------|--|
| Synonyms | Eosinophil Cationic Protein;ECP;Ribonuclease 3;RNase 3;RNASE3;ECP;RNS3 |
| Species | Human |
| Expression Host | HEK293 Cells |
| Sequence | Arg28-Ile160 |
| Accession | AAH96060.1 |
| Calculated Molecular Weight | 16.6 kDa |
| Observed molecular weight | 25-35 kDa |
| Tag | C-His |

Properties

| | |
|-----------------------|--|
| Purity | > 95 % as determined by reducing SDS-PAGE. |
| Endotoxin | < 1.0 EU per µg of the protein as determined by the LAL method. |
| Storage | Store at < -20°C, stable for 6 months. Please minimize freeze-thaw cycles. |
| Shipping | This product is provided as liquid. It is shipped at frozen temperature with blue ice/gel packs. Upon receipt, store it immediately at < - 20°C. |
| Formulation | Supplied as a 0.2 µm filtered solution of 20mM Tris-HCl, 150mM NaCl, 1mMDTT, 10% Glycerol, pH 7.5. |
| Reconstitution | Not Applicable |

Data



> 95 % as determined by reducing SDS-PAGE.

Background

Ribonuclease 3 (RNASE3) is a basic protein that is localized to the eosinophil primary matrix and belongs to the pancreatic ribonuclease family. RNASE3 is released during degranulation of eosinophils. RNASE3 possesses a wide variety of biological activities. RNASE3 interacts with bacterial lipopolysaccharide (LPS) and lipoteichoic acid (LTA). RNASE3 exhibits antibacterial activity, including cytoplasmic membrane depolarization of preferentially Gram-negative, but also Gram-positive strains. It promotes E. coli outer membrane detachment, alteration of the overall cell shape and partial loss of cell content.

For Research Use Only

A Reliable Research Partner in Life Science and Medicine

Toll-free: 1-888-852-8623

Web: www.elabscience.com

Tel: 1-832-243-6086

Email: techsupport@elabscience.com

Fax: 1-832-243-6017