

SIGLEC5 Polyclonal Antibody

catalog number: E-AB-14839

Note: Centrifuge before opening to ensure complete recovery of vial contents.

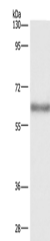
Description

Reactivity	Human;Mouse
Immunogen	Recombinant protein of human SIGLEC5
Host	Rabbit
Isotype	IgG
Purification	Affinity purification
Buffer	Phosphate buffered solution, pH 7.4, containing 0.05% stabilizer and 50% glycerol.

Applications

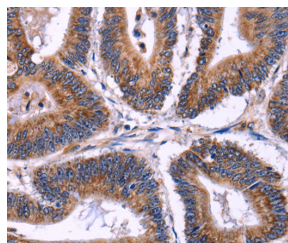
Applications	Recommended Dilution
WB	1:200-1:1000
IHC	1:50-1:200

Data



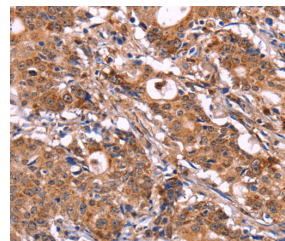
Western Blot analysis of Mouse liver tissue using SIGLEC5 Polyclonal Antibody at dilution of 1:350

Calculated-MW:61 kDa



Immunohistochemistry of paraffin-embedded Human colon cancer using SIGLEC5 Polyclonal Antibody at dilution of

1:30



Immunohistochemistry of paraffin-embedded Human gastric cancer using SIGLEC5 Polyclonal Antibody at dilution of

1:30

Preparation & Storage

Storage	Store at -20°C Valid for 12 months. Avoid freeze / thaw cycles.
Shipping	The product is shipped with ice pack, upon receipt, store it immediately at the temperature recommended.

Background

For Research Use Only

This gene encodes a member of the sialic acid-binding immunoglobulin-like lectin (Siglec) family. These cell surface lectins are characterized by structural motifs in the immunoglobulin (Ig)-like domains and sialic acid recognition sites in the first Ig V set domain. The encoded protein is a member of the CD33-related subset of Siglecs and inhibits the activation of several cell types including monocytes, macrophages and neutrophils. Binding of group B Streptococcus (GBS) to the encoded protein plays a role in GBS immune evasion