

## MSH6 Polyclonal Antibody

catalog number: **E-AB-92368**

**Note:** Centrifuge before opening to ensure complete recovery of vial contents.

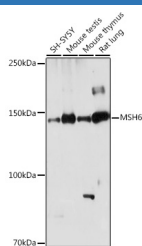
### Description

<b>Reactivity</b>	Human;Mouse;Rat;Monkey
<b>Immunogen</b>	A synthetic peptide of human MSH6
<b>Host</b>	Rabbit
<b>Isotype</b>	IgG
<b>Purification</b>	Affinity purification
<b>Buffer</b>	Phosphate buffered solution, pH 7.4, containing 0.05% stabilizer and 50% glycerol.

### Applications

Applications	Recommended Dilution
<b>WB</b>	1:500-1:2000
<b>IHC</b>	1:50-1:100
<b>IF</b>	1:50-1:200

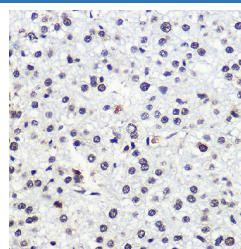
### Data



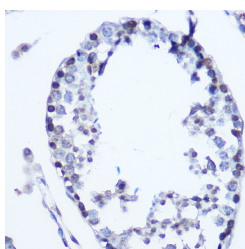
Western blot analysis of extracts of various cell lines using MSH6 Polyclonal Antibody at 1:1000 dilution.

**Observed-MW:Refer to figures**

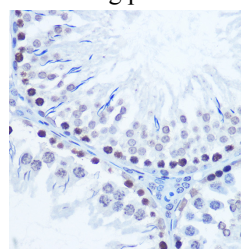
**Calculated-MW:119 kDa/120 kDa/137 kDa/152 kDa**



Immunohistochemistry of paraffin-embedded human liver cancer using MSH6 Polyclonal Antibody at dilution of 1:100 (40x lens). Perform microwave antigen retrieval with 10 mM Tris/EDTA buffer pH 9.0 before commencing with IHC staining protocol.

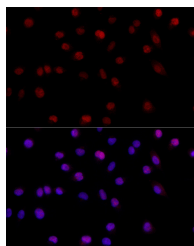


Immunohistochemistry of paraffin-embedded mouse testis using MSH6 Polyclonal Antibody at dilution of 1:100 (40x lens). Perform microwave antigen retrieval with 10 mM Tris/EDTA buffer pH 9.0 before commencing with IHC staining protocol.

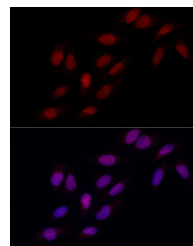


Immunohistochemistry of paraffin-embedded rat testis using MSH6 Polyclonal Antibody at dilution of 1:100 (40x lens). Perform microwave antigen retrieval with 10 mM Tris/EDTA buffer pH 9.0 before commencing with IHC staining protocol.

### For Research Use Only



Immunofluorescence analysis of A-549 cells using MSH6 Polyclonal Antibody at dilution of 1:200 (40x lens). Blue: DAPI for nuclear staining.



Immunofluorescence analysis of U2OS cells using MSH6 Polyclonal Antibody at dilution of 1:200 (40x lens). Blue: DAPI for nuclear staining.

## Preparation & Storage

### Storage

Store at -20°C Valid for 12 months. Avoid freeze / thaw cycles.

### Shipping

The product is shipped with ice pack, upon receipt, store it immediately at the temperature recommended.

## Background

This gene encodes a member of the DNA mismatch repair MutS family. In *E. coli*, the MutS protein helps in the recognition of mismatched nucleotides prior to their repair. A highly conserved region of approximately 150 aa, called the Walker-A adenine nucleotide binding motif, exists in MutS homologs. The encoded protein heterodimerizes with MSH2 to form a mismatch recognition complex that functions as a bidirectional molecular switch that exchanges ADP and ATP as DNA mismatches are bound and dissociated. Mutations in this gene may be associated with hereditary nonpolyposis colon cancer, colorectal cancer, and endometrial cancer. Transcript variants encoding different isoforms have been described.

## For Research Use Only