

CAPRIN1 Polyclonal Antibody

catalog number: E-AB-68414

Note: Centrifuge before opening to ensure complete recovery of vial contents.

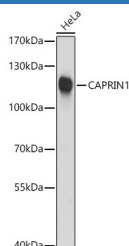
Description

Reactivity	Human;Mouse;Rat
Immunogen	Recombinant protein of human CAPRIN1
Host	Rabbit
Isotype	IgG
Purification	Affinity purification
Buffer	Phosphate buffered solution, pH 7.4, containing 0.05% stabilizer and 50% glycerol.

Applications

WB	1:500-1:2000
IF	1:50-1:200

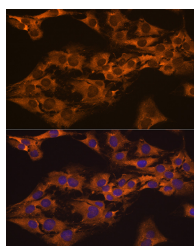
Data



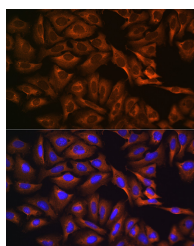
Western blot analysis of extracts of HeLa cells using CAPRIN1 Polyclonal Antibody at 1:3000 dilution.

Observed-MW: 120 kDa

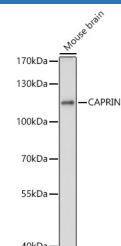
Calculated-MW: 76 kDa/78 kDa



Immunofluorescence analysis of C6 cells using CAPRIN1 Polyclonal antibody at dilution of 1:100 (40x lens). Blue: DAPI for nuclear staining.



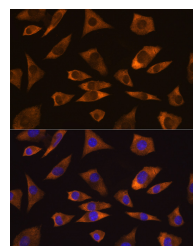
Immunofluorescence analysis of U-2 OS cells using CAPRIN1 Polyclonal antibody at dilution of 1:100 (40x lens). Blue: DAPI for nuclear staining.



Western blot analysis of extracts of Mouse brain using CAPRIN1 Polyclonal Antibody at 1:3000 dilution.

Observed-MW: 120 kDa

Calculated-MW: 76 kDa/78 kDa



Immunofluorescence analysis of L929 cells using CAPRIN1 Polyclonal antibody at dilution of 1:100 (40x lens). Blue: DAPI for nuclear staining.

For Research Use Only

Preparation & Storage

Storage

Store at -20°C Valid for 12 months. Avoid freeze / thaw cycles.

Shipping

The product is shipped with ice pack, upon receipt, store it immediately at the temperature recommended.

Background

CAPRIN1(Caprin-1) is a cytoplasmic phosphoprotein which may regulate the transport and translation of mRNAs of proteins involved in synaptic plasticity in neurons and cell proliferation and migration in multiple cell types. Its levels, except in the brain, are tightly correlated with cellular proliferation. Suppression of expression of human Caprin-1 resulted in slowing of the proliferation rate, which suggests its essential for normal cellular proliferation.

For Research Use Only