

## Recombinant Human SULT2B1 Protein (His Tag)

**Catalog Number:** PKSH033369

**Note:** Centrifuge before opening to ensure complete recovery of vial contents.

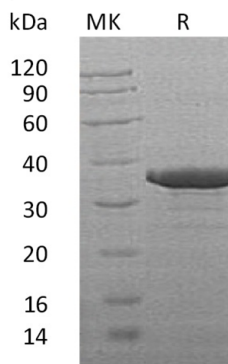
### Description

<b>Species</b>	Human
<b>Source</b>	E.coli-derived Human SULT2B1 protein Met 1-Glu311, with an C-terminal His
<b>Mol_Mass</b>	36.6 kDa
<b>Accession</b>	O00204
<b>Bio-activity</b>	Not validated for activity

### Properties

<b>Purity</b>	> 85 % as determined by reducing SDS-PAGE.
<b>Endotoxin</b>	< 1.0 EU per µg of the protein as determined by the LAL method.
<b>Storage</b>	Store at < -20°C, stable for 6 months. Please minimize freeze-thaw cycles.
<b>Shipping</b>	This product is provided as liquid. It is shipped at frozen temperature with blue ice/gel packs. Upon receipt, store it immediately at < -20°C.
<b>Formulation</b>	Supplied as a 0.2 µm filtered solution of 20mM Tris-HCl, 100mM NaCl, 1mM EDTA, pH 8.0.
<b>Reconstitution</b>	Not Applicable

### Data



> 85 % as determined by reducing SDS-PAGE.

### Background

Sulfotransferase Family Cytosolic 2B Member 1(SULT2B1) is a member of the Sulfotransferase 1 family. SULT2B1 is highly expressed in the placenta; prostate; and trachea with lower expression levels in the small intestine and lung. SULT2B1 catalyzes the sulfate conjugation of numerous hormones; neurotransmitters; drugs; and xenobiotic compounds. Sulfonation enhances the water solubility of molecules; and therefore their renal excretion; however SULT2B1 can also result in bioactivation to form active metabolites.