

CD327 Polyclonal Antibody

catalog number: E-AB-13123

Note: Centrifuge before opening to ensure complete recovery of vial contents.

Description

Reactivity	Human
Immunogen	Synthetic peptide of human SIGLEC6
Host	Rabbit
Isotype	IgG
Purification	Affinity purification
Conjugation	Unconjugated
buffer	Phosphate buffered solution, pH 7.4, containing 0.05% stabilizer and 50% glycerol.

Applications

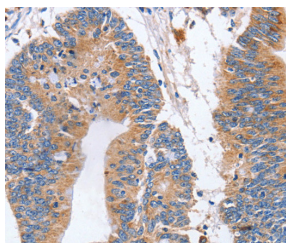
Applications	Recommended Dilution
WB	1:500-1:2000
IHC	1:50-1:200

Data

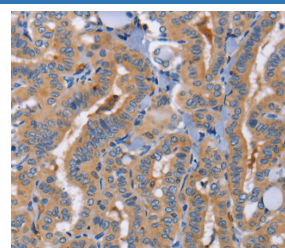


Western Blot analysis of Human placenta tissue using CD327 Polyclonal Antibody at dilution of 1:1000

Calculated-MV:50 kDa



Immunohistochemistry of paraffin-embedded Human colon cancer using CD327 Polyclonal Antibody at dilution of 1:70



Immunohistochemistry of paraffin-embedded Human thyroid cancer using CD327 Polyclonal Antibody at dilution of 1:70

Preparation & Storage

Storage	Store at -20°C Valid for 12 months. Avoid freeze / thaw cycles.
Shipping	The product is shipped with ice pack, upon receipt, store it immediately at the temperature recommended.

Background

The SIGLEC6 gene to 19q13.3, which is where the CD33 gene is located. Putative adhesion molecule that mediates sialic-acid dependent binding to cells. Binds to alpha-2,6-linked sialic acid. The sialic acid recognition site may be masked by cis interactions with sialic acids on the same cell surface. Expressed at high levels in placenta (cyto- and syncytiotrophoblastic cells) and at lower levels in spleen, peripheral blood leukocytes (predominantly B-cells) and small intestine.

For Research Use Only