

Recombinant Mouse Mesothelin/MSLN Protein (His Tag)



Catalog Number:PKSM041304

Note: Centrifuge before opening to ensure complete recovery of vial contents.

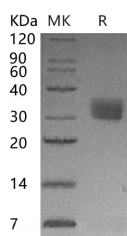
Description

Synonyms	Mesothelin;Msln;Mes;Mpf;CAK1;MSLN
Species	Mouse
Expression Host	HEK293 Cells
Sequence	Asp298-Ser600
Accession	Q61468
Calculated Molecular Weight	35.0 kDa
Observed molecular weight	38-55 kDa
Tag	C-His

Properties

Purity	> 95 % as determined by reducing SDS-PAGE.
Endotoxin	< 1.0 EU per µg of the protein as determined by the LAL method.
Storage	Generally, lyophilized proteins are stable for up to 12 months when stored at -20 to -80°C. Reconstituted protein solution can be stored at 4-8°C for 2-7 days. Aliquots of reconstituted samples are stable at < -20°C for 3 months.
Shipping	This product is provided as lyophilized powder which is shipped with ice packs.
Formulation	Lyophilized from a 0.2 µm filtered solution of PBS, pH 7.4. Normally 5 % - 8 % trehalose, mannitol and 0.01% Tween80 are added as protectants before lyophilization. Please refer to the specific buffer information in the printed manual.
Reconstitution	Please refer to the printed manual for detailed information.

Data



> 95 % as determined by reducing SDS-PAGE.

Background

Mesothelin is derived from a 70 kDa precursor that also includes Megakaryocyte Potentiating Factor (MPF). The 70 kDa precursor is expressed on the cell surface where it is cleaved at a dibasic proteolytic site to release the 32 kDa glycosylated MPF. MPF is a cytokine that potentiates IL3 induced megakaryocyte colony formation. The term Mesothelin refers to the 40 kDa glycosylated protein which remains attached to the cell surface via a GPI linkage. Mesothelin is over expressed in several human tumors, including mesothelioma and ovarian and pancreatic adenocarcinoma. The interaction between mesothelin and MUC16 (also known as CA125) may facilitate the implantation and peritoneal spread of tumors by cell adhesion. The region (296-359) consisting of 64 amino acids at the N-terminal of cell surface mesothelin is the functional binding domain for MUC16. Mesothelin is a tumour differentiation antigen that is normally present on the mesothelial

For Research Use Only

A Reliable Research Partner in Life Science and Medicine

Toll-free: 1-888-852-8623

Web: www.elabscience.com

Tel: 1-832-243-6086

Email: techsupport@elabscience.com

Fax: 1-832-243-6017

Recombinant Mouse Mesothelin/MSLN Protein (His Tag)



Catalog Number: PKSM041304

cells lining the pleura, peritoneum and pericardium. A soluble form of Mesothelin, with its GPI anchor intact, is released from tumor cells and binds to MMR/CD206 on macrophages.

For Research Use Only

A Reliable Research Partner in Life Science and Medicine

Toll-free: 1-888-852-8623

Tel: 1-832-243-6086

Fax: 1-832-243-6017

Web: www.elabscience.com

Email: techsupport@elabscience.com