

Recombinant LILRB1 Monoclonal Antibody

catalog number: AN301773L

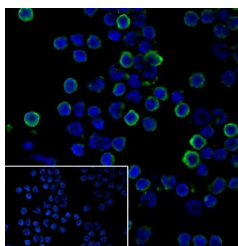
Note: Centrifuge before opening to ensure complete recovery of vial contents.

Description

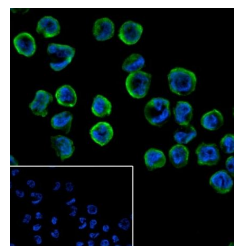
Reactivity	Human;Rat;Mouse
Immunogen	Recombinant human LILRB1 fragment
Host	Rabbit
Isotype	IgG, κ
Clone	A481
Purification	Protein A purified
Buffer	PBS, 50% glycerol, 0.05% Proclin 300, 0.05% protein protectant.

Applications Recommended Dilution

WB	1:500-1:2000
IHC	1:100-1:500
IF	1:50
FCM	1:50-1:100



Immunofluorescent analysis of (4% Paraformaldehyde) fixed PBMC cells using anti-LILRB1 Monoclonal Antibody at dilution of 1:50.



Immunofluorescent analysis of (4% Paraformaldehyde) fixed THP-1 cells using anti-LILRB1 Monoclonal Antibody at dilution of 1:50.

Preparation & Storage

Storage	Store at -20°C Valid for 12 months. Avoid freeze / thaw cycles.
Shipping	Ice bag

Background

LILRB1 is a member of the leukocyte immunoglobulin-like receptor (LIR) family. This protein belongs to the subfamily B class of LIR receptors which contain two or four extracellular immunoglobulin domains, a transmembrane domain, and two to four cytoplasmic immunoreceptor tyrosine-based inhibitory motifs (ITIMs). The receptor is expressed on immune cells where it binds to MHC class I molecules on antigen-presenting cells and transduces a negative signal that inhibits stimulation of an immune response. It is thought to control inflammatory responses and cytotoxicity to help focus the immune response and limit autoreactivity.

For Research Use Only